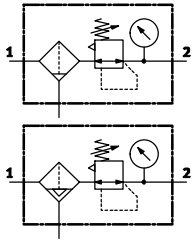


Filter Regulators LFR – Inch Series

Technical Data

FESTO



Materials
Housing: Die-cast zinc
Bowl: Polycarbonate
Seals: Nitrile rubber
Free of copper and PTFE



| Technical Data | | | | Download CAD data → www.festo.com/us/engineering | | |
|---------------------------------|---|--------|-------------------------|--|-------------------------|-------------------------|
| Size | Mini | | Midi | | Maxi | |
| Pneumatic connection | 1/8NPT | 1/4NPT | 3/8NPT | 1/2NPT | 3/4NPT | 1NPT |
| Design | Filter regulator with pressure gauge | | | | | |
| | Filter regulator without pressure gauge | | | | | |
| Type of mounting | Via accessories | | | | | |
| | In-line installation | | | | | |
| | Front panel mounting | | | | | |
| Mounting position | Vertical ±5° | | | | | |
| Grade of filtration [µm] | 5 or 40 | | | | | |
| Pressure regulation range [psi] | 7.5 ... 103 | | | | | |
| | 7.5 ... 176 | | | | | |
| Pressure indication | Via pressure gauge | | | | | |
| Length [in] | 3.0 | | 3.7 | | 4.2 | |
| Width [in] | 1.6 (2.5) ¹⁾ | | 2.2 (3.3) ¹⁾ | | 2.6 (3.8) ¹⁾ | 2.6 (4.6) ¹⁾ |
| Height [in] | 8.3 | | 10.6 | | 10.7 | |

1) Value in brackets with connecting plates.

| Standard Nominal Flow Rate ¹⁾ q _N [scfm] | | | | | | |
|--|--------|--------|--------|--------|--------|------|
| Size | Mini | | Midi | | Maxi | |
| Pneumatic connection | 1/8NPT | 1/4NPT | 3/8NPT | 1/2NPT | 3/4NPT | 1NPT |
| Pressure regulation range 7.5 ... 103 psi | | | | | | |
| 40 µm | 32 | 53 | 113 | 138 | 353 | 388 |
| Pressure regulation range 7.5 ... 176 psi | | | | | | |
| Grade of filtration | 5 µm | 23 | 42 | 85 | 92 | 268 |
| | 40 µm | 26 | 49 | 109 | 120 | 342 |

1) Measured at p₁ = 147 psi, p₂ = 88 psi and Δp = 15 psi.

| Operating Conditions | | |
|--------------------------|---|-----------------|
| Condensate drain | Manual rotary | Fully automatic |
| Operating medium | Compressed air in accordance with ISO 8573-1:2010 [–:–:–] | |
| Supply pressure [psi] | 15 ... 235 | 29 ... 176 |
| Ambient temperature [°F] | 14 ... 140 | |

Filter Regulators LFR – Inch Series

FESTO

Ordering Data

| Ordering Data – Filtration Grade 40µm | | | | | | | | |
|---------------------------------------|------|------------|---|------------------------|----|---|----------------------|----|
| Condensate drain | Size | Connection | Pressure regulation range 7.5 ... 103 psi | | LT | Pressure regulation range 7.5 ... 176 psi | | LT |
| | | | Part No. | Type | | Part No. | Type | |
| Directly actuated diaphragm regulator | | | | | | | | |
| Turned manually | Mini | 1/8NPT | 173762 | LFR-1/8-D-7-MINI-NPT | 3D | 173756 | LFR-1/8-D-MINI-NPT | 3D |
| | | 1/4NPT | 173770 | LFR-1/4-D-7-MINI-NPT | 3D | 173764 | LFR-1/4-D-MINI-NPT | 3D |
| | Midi | 3/8NPT | 173786 | LFR-3/8-D-7-MIDI-NPT | 3D | 173780 | LFR-3/8-D-MIDI-NPT | 3D |
| | | 1/2NPT | 173794 | LFR-1/2-D-7-MIDI-NPT | 3D | 173788 | LFR-1/2-D-MIDI-NPT | 3D |
| | Maxi | 3/4NPT | 173810 | LFR-3/4-D-7-MAXI-NPT | 3D | 173804 | LFR-3/4-D-MAXI-NPT | 3D |
| | | 1NPT | 173818 | LFR-1-D-7-MAXI-NPT | 3D | 173812 | LFR-1-D-MAXI-NPT | 3D |
| Fully automatic | Mini | 1/8NPT | 173763 | LFR-1/8-D-7-MINI-A-NPT | 3D | 173757 | LFR-1/8-D-MINI-A-NPT | 3D |
| | | 1/4NPT | 173771 | LFR-1/4-D-7-MINI-A-NPT | 3D | 173765 | LFR-1/4-D-MINI-A-NPT | 3D |
| | Midi | 3/8NPT | 173787 | LFR-3/8-D-7-MIDI-A-NPT | 3D | 173781 | LFR-3/8-D-MIDI-A-NPT | 3D |
| | | 1/2NPT | 173795 | LFR-1/2-D-7-MIDI-A-NPT | 3D | 173789 | LFR-1/2-D-MIDI-A-NPT | 3D |
| | Maxi | 3/4NPT | 173811 | LFR-3/4-D-7-MAXI-A-NPT | 3D | 173805 | LFR-3/4-D-MAXI-A-NPT | 3D |
| | | 1NPT | 173819 | LFR-1-D-7-MAXI-A-NPT | 3D | 173813 | LFR-1-D-MAXI-A-NPT | 3D |

| Ordering Data – Basic Units without Threaded Connecting Plates, Filtration Grade 5µm | | | | | | | | | |
|--|------|------------|---|-----------------|----|---|------|----|--|
| Condensate drain | Size | Connection | Pressure regulation range 7.5 ... 103 psi | | LT | Pressure regulation range 7.5 ... 176 psi | | LT | |
| | | | Part No. | Type | | Part No. | Type | | |
| Basic Unit without pressure gauge | | | | | | | | | |
| Turned manually | Mini | – | 546454 | LFR-D-5M-MINI | 1D | – | – | | |
| | Midi | – | 546455 | LFR-D-5M-MIDI | 1D | – | – | | |
| | Maxi | – | 546461 | LFR-D-5M-MAXI | 1D | – | – | | |
| Fully automatic | Mini | – | 546462 | LFR-D-5M-MINI-A | 1D | – | – | | |
| | Midi | – | 546468 | LFR-D-5M-MIDI-A | 1D | – | – | | |
| | Maxi | – | 546469 | LFR-D-5M-MAXI-A | 1D | – | – | | |

| Ordering Data – Basic Units without Threaded Connecting Plates, Filtration Grade 40µm | | | | | | | | |
|---|------|------------|---|-------------------|----|---|-----------------|----|
| Condensate drain | Size | Connection | Pressure regulation range 7.5 ... 103 psi | | LT | Pressure regulation range 7.5 ... 176 psi | | LT |
| | | | Part No. | Type | | Part No. | Type | |
| Basic Unit without pressure gauge | | | | | | | | |
| Turned manually | Mini | – | 546456 | LFR-D-7-MINI | 1D | 546432 | LFR-D-MINI | 1D |
| | Midi | – | 546463 | LFR-D-7-MIDI | 1D | 546425 | LFR-D-MIDI | 1D |
| | Maxi | – | 546470 | LFR-D-7-MAXI | 1D | 546437 | LFR-D-MAXI | 1D |
| Fully automatic | Mini | – | 546457 | LFR-D-7-MINI-A | 1D | 546433 | LFR-D-MINI-A | 1D |
| | Midi | – | 546464 | LFR-D-7-MIDI-A | 1D | 546426 | LFR-D-MIDI-A | 1D |
| | Maxi | – | 546471 | LFR-D-7-MAXI-A | 1D | 546438 | LFR-D-MAXI-A | 1D |
| Basic Unit without pressure gauge, with integrated return flow function | | | | | | | | |
| Turned manually | Maxi | – | 546514 | LFR-D-7-DI-MAXI | 1D | 546512 | LFR-D-DI-MAXI | 1D |
| Fully automatic | Maxi | – | 546518 | LFR-D-7-DI-MAXI-A | 1D | 546515 | LFR-D-DI-MAXI-A | 1D |

LT = Lead time

1D typically ships same day/next day

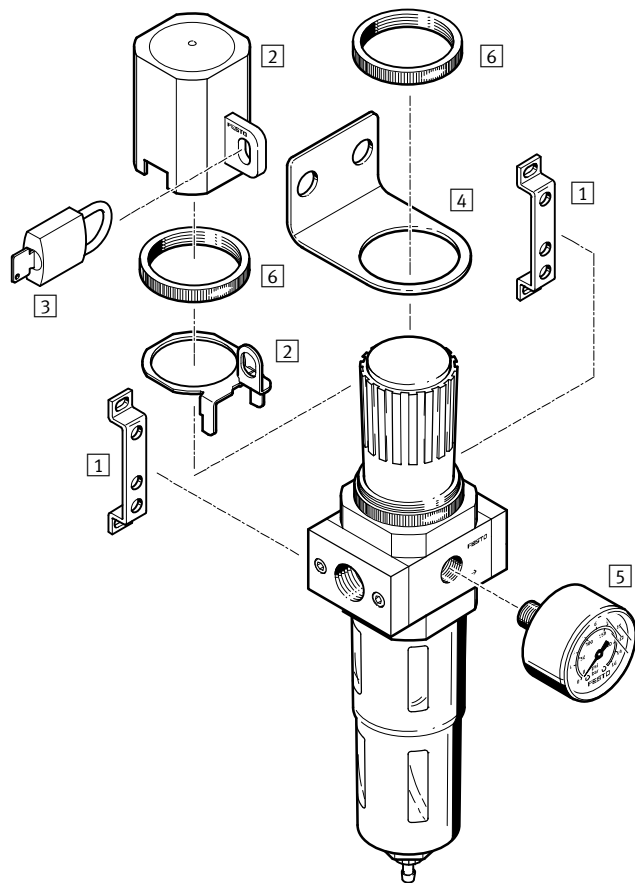
3D typically ships within 3 days

Filter Regulators LFR – Inch Series

Accessories



Accessories Overview



| Mounting attachments and accessories | | → Page/Internet |
|--------------------------------------|---|-----------------|
| 1 | Mounting bracket HFOE | 209 |
| 2 | Regulator lock LRVS | 209 |
| 3 | Padlock LRVS-D | lrvs-d |
| 4 | Mounting bracket HR-D | 209 |
| 5 | Pressure gauge MA | 208 |
| 6 | Knurled nut HMR (not included in the basic units' scope of delivery) | hmr |