

A-67

KA-75 Embedded Pulls

A



특징

- 패널로부터 돌출을 최소화하여 협소한 장소에서 사용이 용이함.

사양

- 재 질 : 아연 합금(ZDCII)
- 표면처리 : 세티라이트 크롬 도금

용도

- 정보 통신 장비, 반도체 장비, 분 · 배전반, 제어반, 산업용 기계, 이화학기기 및 시험기기 등.

Features

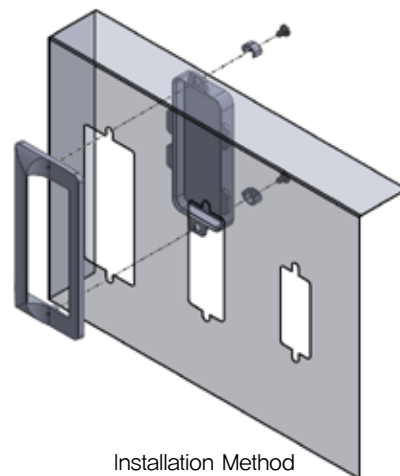
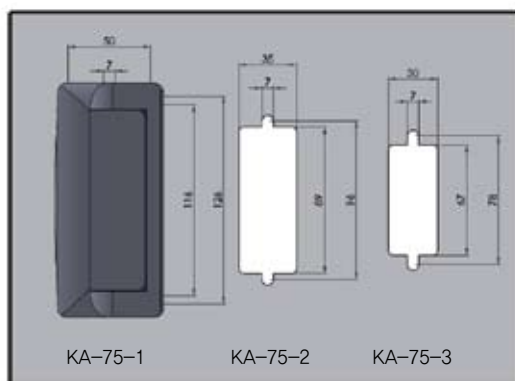
- Easy to use in narrow place by minimizing protrusion from the panel

Specification

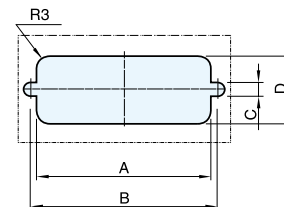
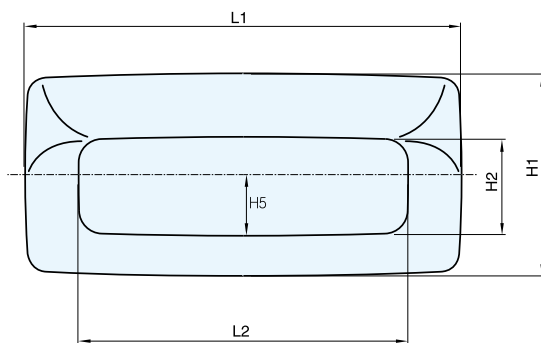
- Materials Used : Zinc alloy(ZDCII)
- Finish : Satellite Chrome plating

Use

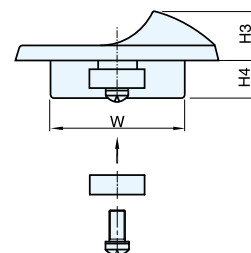
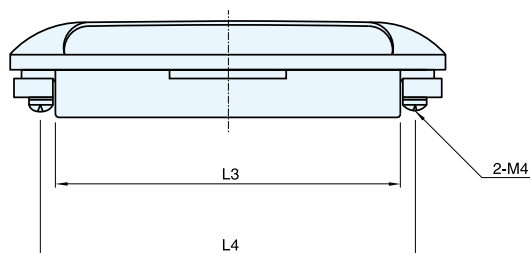
- IT equipment, semiconductor equipment, distribution panels, control panels, industrial machinery, physico-chemical instruments, test instruments, etc.



Installation Method



PANEL DRILLING DIMENSIONS.



	L1	L2	L3	L4	H1	H2	H3	H4	H5	W	A	B	C	D	Net weight(g)
KA-75-1	142	110	115	126	65	34	12.5	11	22.5	49	116	126	7	50	165
KA-75-2	112	84	88	96	52	25	12.5	9.5	15.5	33.5	89	96	7	35	71
KA-75-3	92	63	66	78	43	21	11	8.5	13.5	29	67	78	7	30	55