

Air valve(5/2 way \ 5/3 way)



7A Series

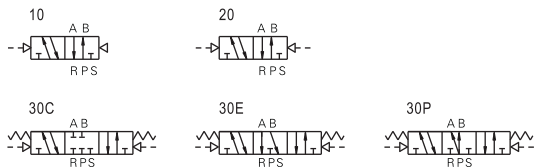


Specification

Model	7A110-06	7A120-06	7A130-06	7A210-08	7A220-08	7A230-08
Port size ①	In=Out=Exhaust=1/8"			In=Out=1/4" Exhaust=1/8"		
Model	7MA110	7MA120	7MA130	7MA210	7MA220	7MA230
Orifice size	9.5mm ²		8.0mm ²	14.0mm ²		11.0mm ²
Cv value	0.55		0.48	0.83		0.65
Valve type	5 port 2 position		5 port 3 position	5 port 2 position		5 port 3 position
Weight	65g	75g	85g	105g	120g	130g
Fluid	Air(to be filtered by 40 μ m filter element)					
Acting	Exterior control					
Operating pressure	0.15~0.8MPa(21~114psi)					
Proof pressure	1.5MPa(215psi)					
Temperature °C	-20~70					
Material of body	Aluminum alloy					
Lubrication ②	Not required					
Max. frequency ③	5 cycle/sec		3 cycle/sec	5 cycle/sec		3 cycle/sec

- ① PT thread、NPT thread and G thread are available.(Except 7MA series).
② Once lubricated air is used, continue with same medium to optimise valve life span. Lubricants like ISO VG32 or equivalent are recommended.
③ The maximum actuation frequency is in the no-load state.

Symbol

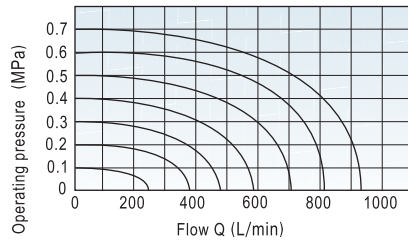


Product feature

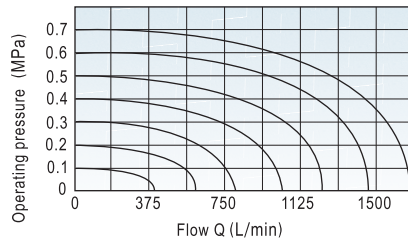
1. Collective exhaust type. exhausting air through R and S.
2. Aluminium alloy die-casting body, Improved internal structure for larger flow rate.
3. Tubing options allow direct tubing(7A) on the valves or manifold mount (7MA) for space saving.
4. Option '7MA' is used with valve sub base.

Flow chart

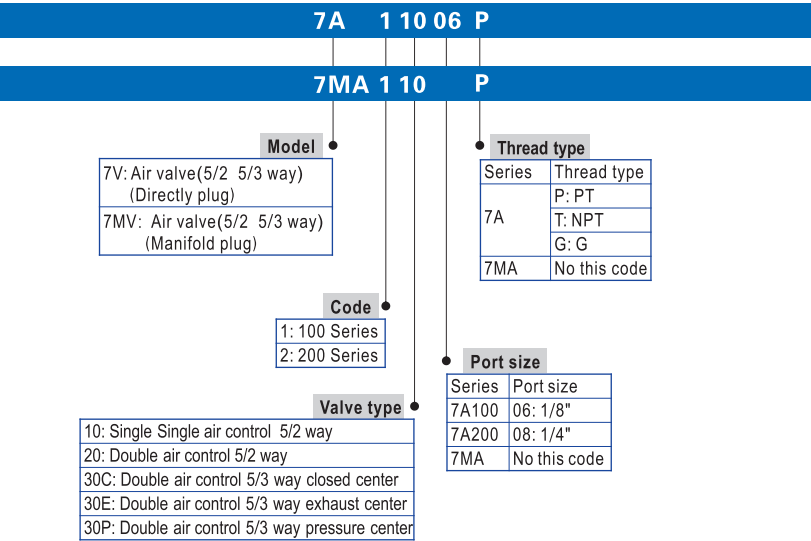
Model: 7A110-06、7MA110



Model: 7A210-08、7MA210



Ordering code



Please refer to P80 for manifold specification and the order way.



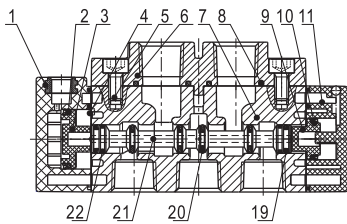
Air valve(5/2 way \ 5/3 way)

7A Series

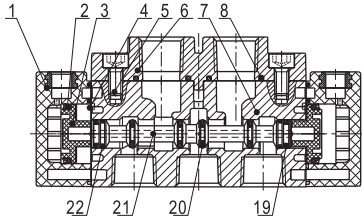
AIRTAC

Inner structure

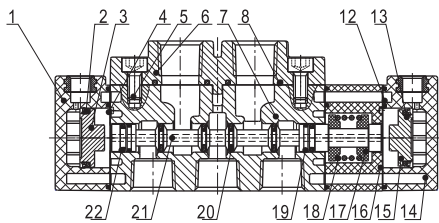
7A110



7A120

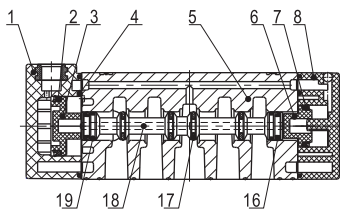


7A130C

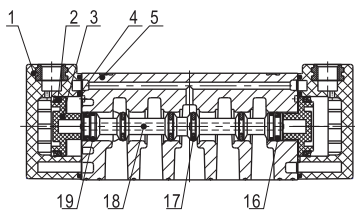


NO.	Item	NO.	Item	NO.	Item	NO.	Item	NO.	Item
1	Pilot body	6	Port block	11	Bottom cover	16	Side cover	21	Spool
2	Piston O-ring	7	Body	12	Gasket	17	Spring holder	22	Spool gasket
3	Big piston	8	Screw	13	Piston O-ring	18	Spring		
4	O-ring	9	Small piston	14	Pilot body	19	Wear ring		
5	Screw	10	Gasket	15	Big piston	20	Spool O-ring		

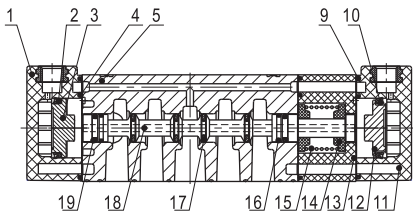
7MA110



7MA120



7MA130C



NO.	Item	NO.	Item	NO.	Item	NO.	Item	NO.	Item
1	Pilot body	5	Body	9	Gasket	13	Side cover	17	Spool O-ring
2	Piston O-ring	6	Small piston	10	Piston O-ring	14	Spring holder	18	Spool
3	Big piston	7	Gasket	11	Pilot body	15	Spring	19	Spool gasket
4	O-ring	8	Bottom cover	12	Big piston	16	Wear ring		



7A

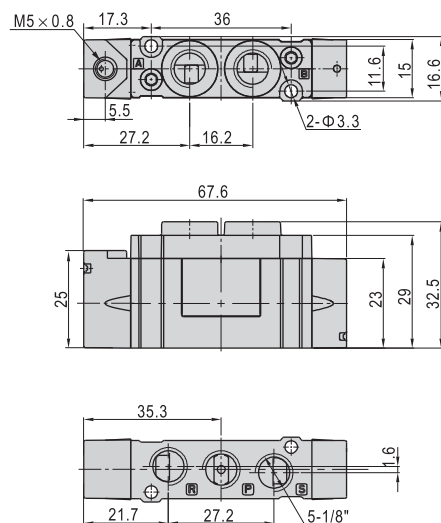
Air valve(5/2 way \ 5/3 way)

AIRTAC

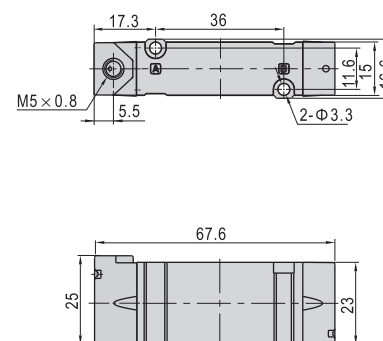
7A Series

■ Dimensions

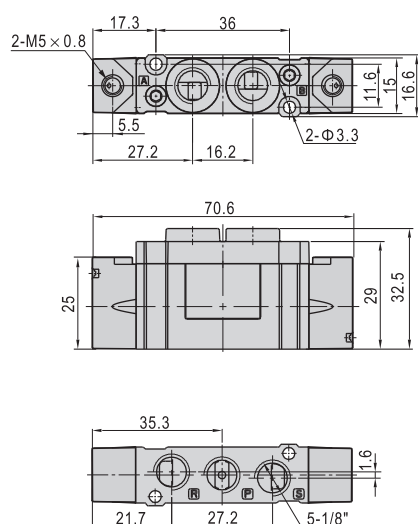
7A110



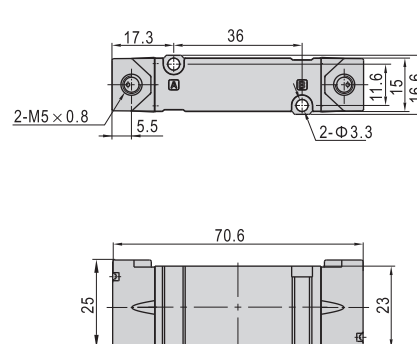
7MA110



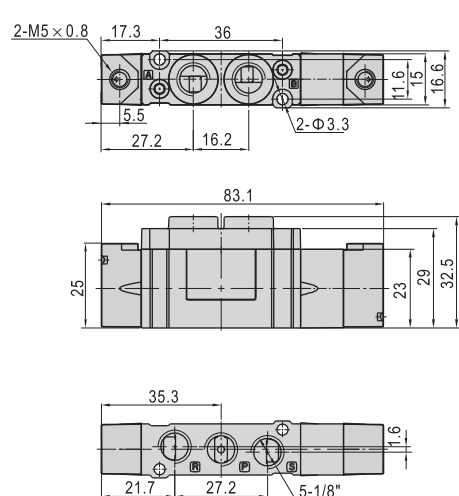
7A120



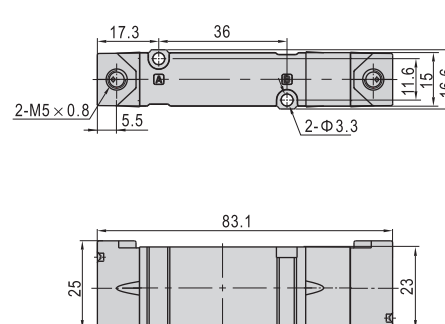
7MA120



7A130



7MA130

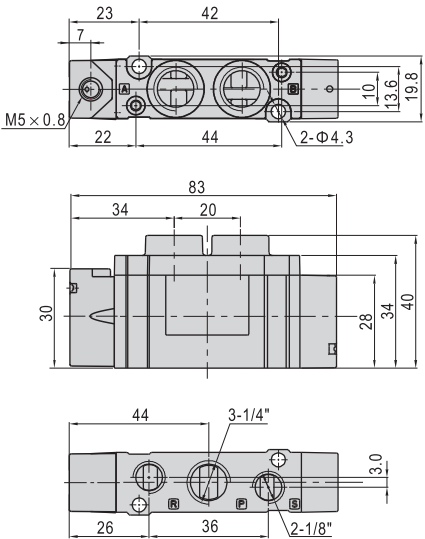


Air valve(5/2 way \ 5/3 way)

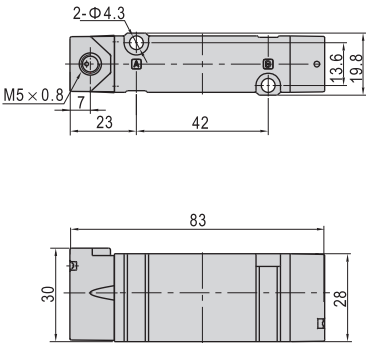
AIRTAC

7A Series

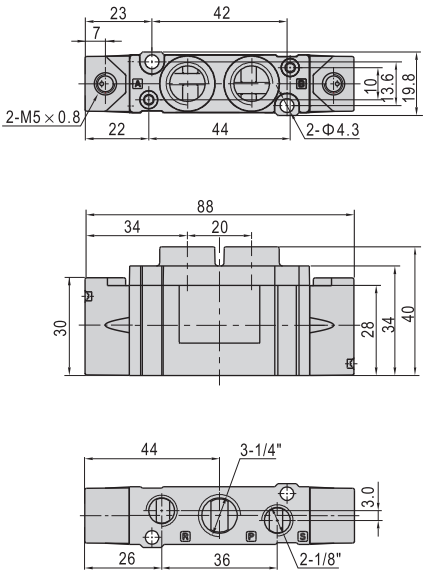
7A210



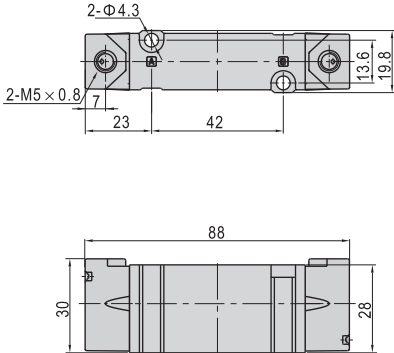
7MA210



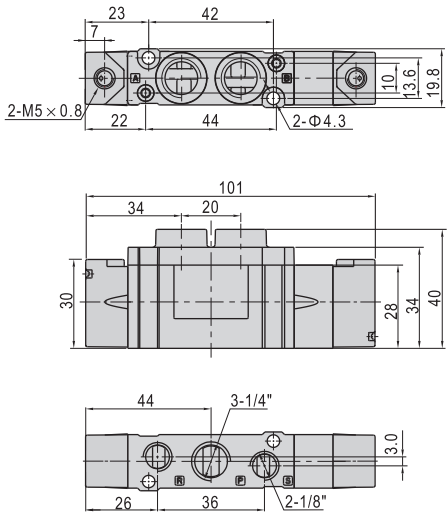
7A220



7MA220



7A230



7MA230

