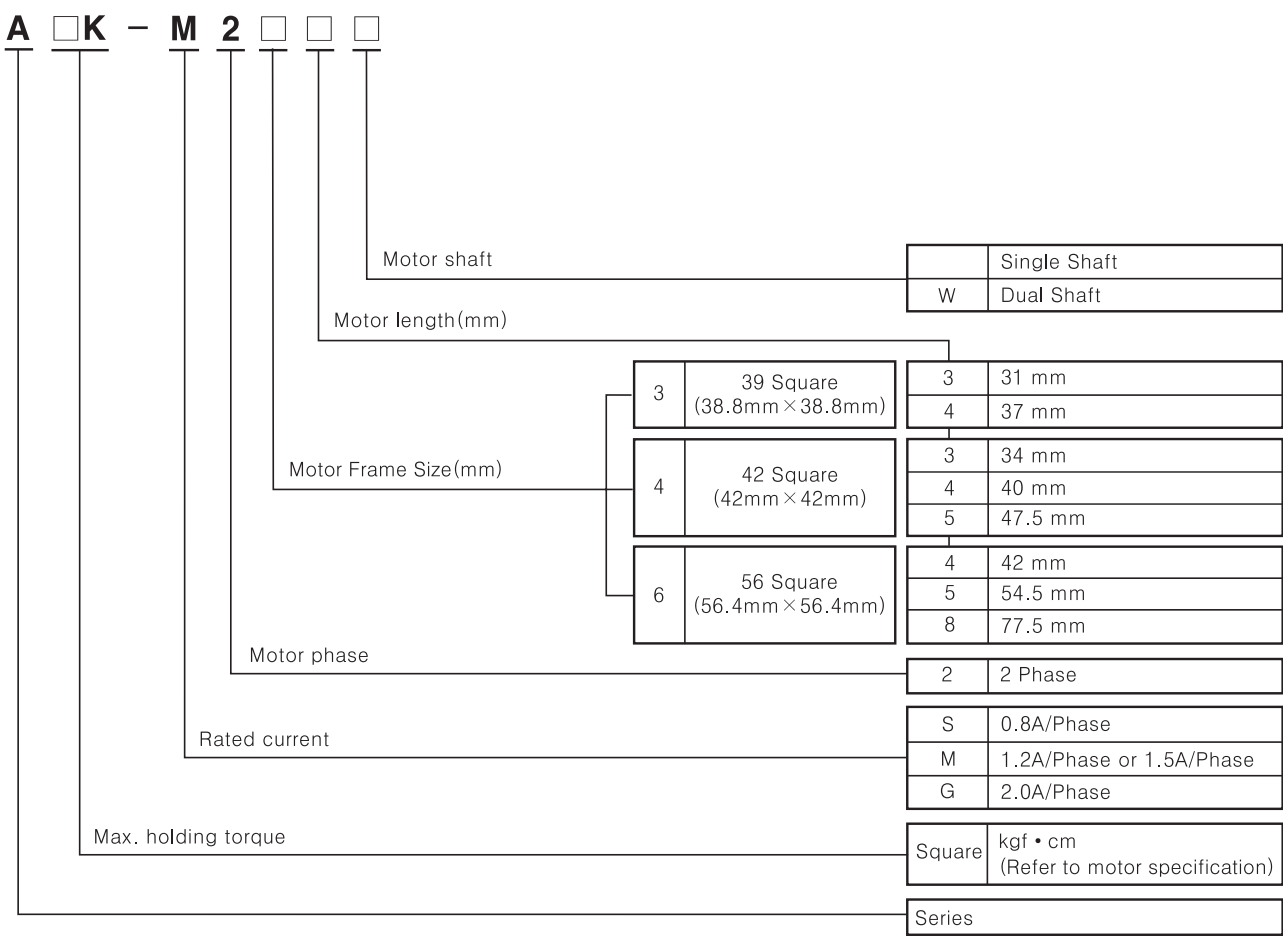


2-Phase Stepping Motor

Ordering information



Specifications

Type		Medel	A/Phase (A)	Max. holding torque (kgf • cm)	Max. allowable torque (kgf • cm)	Moment of rotor inertia (g • cm ²)	Winding resistance (Ω)	Motor length (mm)
39 Square	Shaft type	A1K-S233(W)	0.8	1.45	—	17	5	31
		A2K-S234(W)	0.8	2.15	—	27	7.5	37
A2K-M243(W)		1.2	2.06	—	33	2.7	34	
A3K-M244(W)		1.2	2.97	—	56	3.3	40	
A4K-M245(W)		1.2	3.48	—	72	2.8	47.5	
A6K-M264(W)		1.5	5.67	—	145.0	2.1	42	
A6K-G264(W)		2	5.67	—	145.0	1.3	42	
A9K-M265(W)		1.5	9.25	—	245.0	2.8	54.5	
A9K-G265(W)		2	9.25	—	245.0	1.7	54.5	
A16K-M268(W)		1.5	15.70	—	470.0	4.2	77.5	
A16K-G268(W)		2	15.70	—	460.0	2.5	77.5	
56 Square								

※ () stands for dual shaft of motor.

※ Motor length was measured without shaft.

2-Phase Stepping Motor

■ Specifications

● 39 Square

Model	A1K-S233(W)	A2K-S234(W)
Max. holding torque	1.45 kgf • cm (0.145 N • m)	2.15 kgf • cm (0.215 N • m)
Moment of rotor inertia	17 g • cm ² (17 × 10 ⁻⁷ kg • m ²)	27 g • cm ² (27 × 10 ⁻⁷ kgf • m ²)
Rated current	0.8A/Phase	
Basic step angle	1.8° / 0.9° (Full step/Half step)	
Insulation class	CLASS B type (130℃)	
Insulation resistance	Min. 100MΩ (Standard 500VDC mega) between Motor coil-case	
Dielectric strength	1Min. at 0.5kVAC 50/60Hz between Motor coil-case	
Ambient temperature	0℃ ~ +50℃ (Storage condition : -20℃ ~ +70℃)	
Ambient humidity	20 ~ 90%RH	
Protection	IP30 (IEC34-5 standard)	
Unit weight	Approx. 0.17kg	Approx. 0.2kg
Reference	N-20~21	

● 42 Square

Model	A2K-M243(W)	A3K-M244(W)	A4K-M245(W)
Max. holding torque	2.06 kgf • cm (0.206 N • m)	2.97 kgf • cm (0.280 N • m)	3.48 kgf • cm (0.348 N • m)
Moment of rotor inertia	33 g • cm ² (33 × 10 ⁻⁷ kg • m ²)	56 g • cm ² (56 × 10 ⁻⁷ kg • m ²)	72 g • cm ² (72 × 10 ⁻⁷ kgf • m ²)
Rated current	1.2A/Phase		
Basic step angle	1.8° / 0.9° (Full step/Half step)		
Insulation class	CLASS B type (130℃)		
Insulation resistance	Min. 100MΩ (Standard 500VDC mega) between Motor coil-case		
Dielectric strength	1Min. at 0.5kVAC 50/60Hz between Motor coil-case		
Ambient temperature	0℃ ~ +50℃ (Storage condition : -20℃ ~ +70℃)		
Ambient humidity	20 ~ 90%RH		
Protection	IP30 (IEC34-5 standard)		
Unit weight	Approx. 0.23kg	Approx. 0.29kg	Approx. 0.43kg
Reference	N-20~21		

● 56 Square

Model	A6K-M264(W)	A6K-G264(W)	A9K-M265(W)	A9K-G265(W)	A16K-M268(W)	A16K-G268(W)
Max. holding torque	5.67 kgf・cm (0.567 N・m)		9.25 kgf・cm (0.925 N・m)		15.70 kgf・cm (1.570 N・m)	
Moment of rotor inertia	145 g・cm ² (145×10 ⁻⁷ kg・m ²)		245 g・cm ² (245×10 ⁻⁷ kg・m ²)		470 g・cm ² (470×10 ⁻⁷ kgf・m ²)	
Rated current	1.5A/Phase	2.0A/Phase	1.5A/Phase	2.0A/Phase	1.5A/Phase	2.0A/Phase
Basic step angle	1.8° / 0.9° (Full step/Half step)					
Insulation class	CLASS B type (130℃)					
Insulation resistance	Min. 100MΩ (Standard 500VDC mega) between Motor coil-case					
Dielectric strength	1Min. at 0.5kVAC 50/60Hz between Motor coil-case					
Ambient temperature	0℃ ~ +50℃ (Storage condition : -20℃ ~ +70℃)					
Ambient humidity	20 ~ 90%RH					
Protection	IP30(IEC34-5 standard)					
Unit weight	Approx. 0.5kg		Approx. 0.7kg		Approx. 1.1kg	
Reference	N-20~21					

2-Phase Stepping Motor

□39mm/□42mm/□56mm Shaft type

■Features

- Compact and light weight with high accuracy, speed and torque
- Suitable for small-sized equipment applications
- Connector wiring type (Except for 39 Square motor)
- Cost-effective

⚠ Please read "Caution for your safety" in operation manual before using.



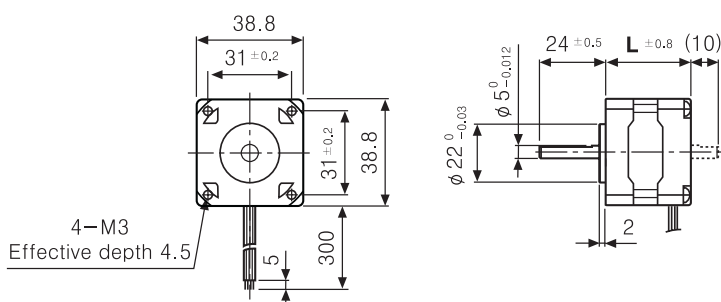
42 Square



56 Square

■Dimensions

◎39 Square

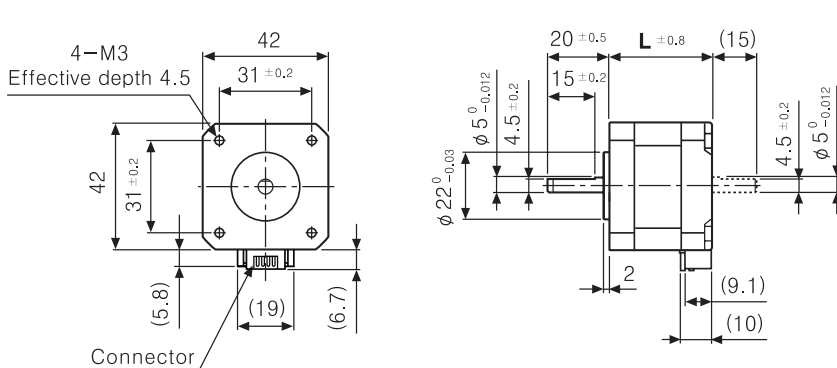


(Unit:mm)

MODEL	L
A1K-S233(W)	31
A2K-S234(W)	37

※This is dual shaft type of dimension.
In case of single shaft, there is no (.....) part of shaft.

◎42 Square

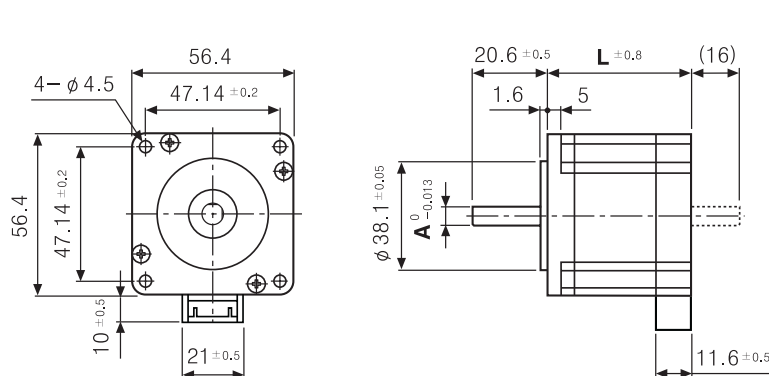


(Unit:mm)

MODEL	L
A2K-M243(W)	34
A3K-M244(W)	40
A4K-M245(W)	47.5

※This is dual shaft type of dimension.
In case of single shaft, there is no (.....) part of shaft.

◎56 Square



(Unit:mm)

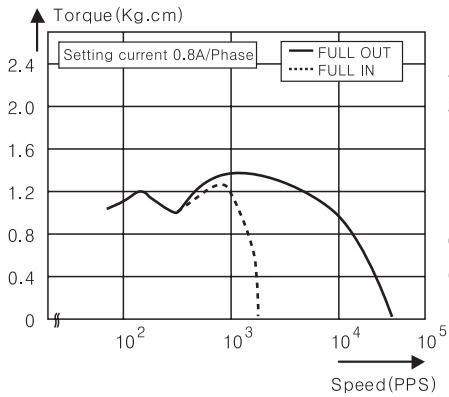
MODEL	L	A
A6K-□264(W)	42	6.35
A9K-□265(W)	54.5	6.35
A16K-□268(W)	77.5	8

※This is dual shaft type of dimension.
In case of single shaft, there is no (.....) part of shaft.

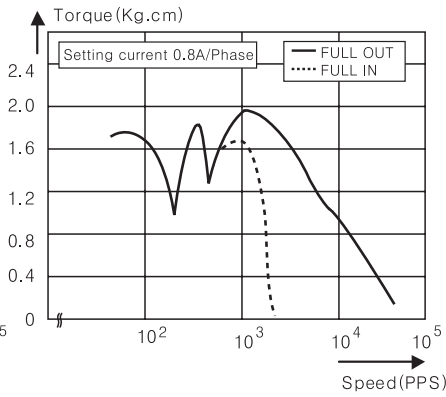
2-Phase Stepping Motor

Characteristic

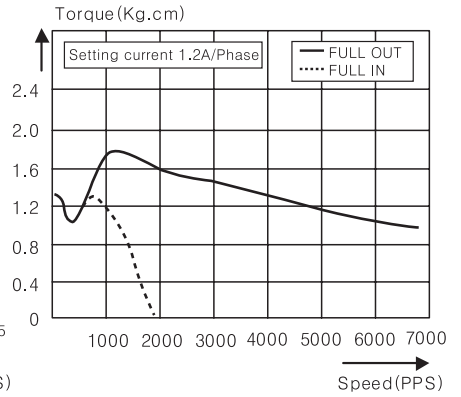
●A1K-S233(W)



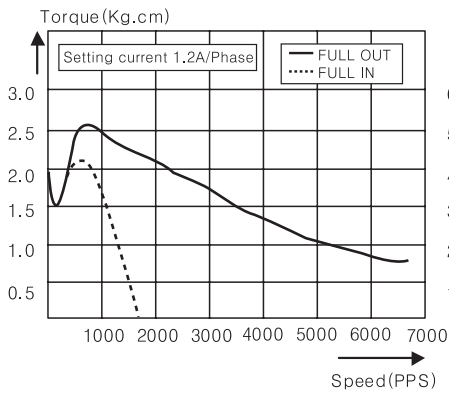
●A2K-S234(W)



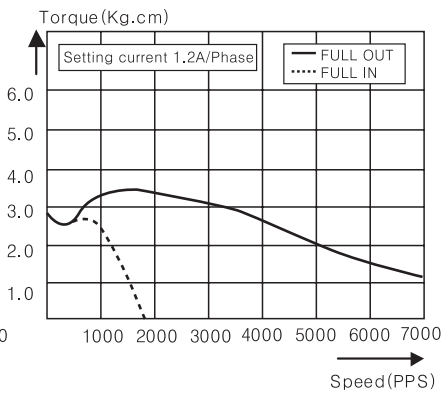
●A2K-M243(W)



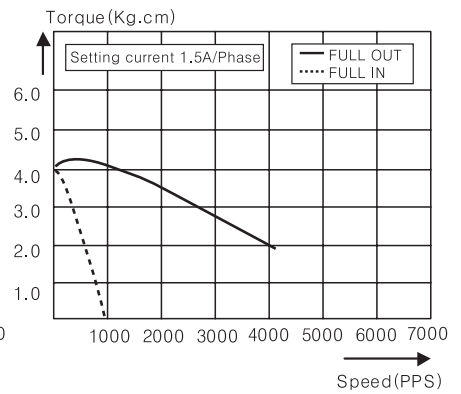
●A3K-M244(W)



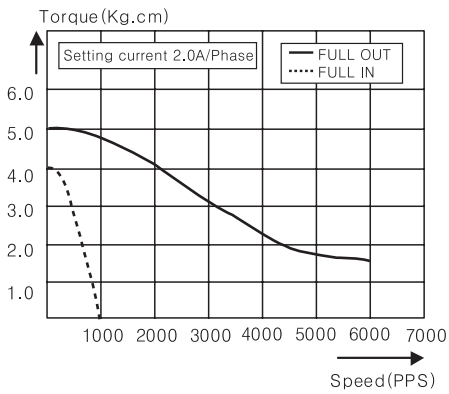
●A4K-M245(W)



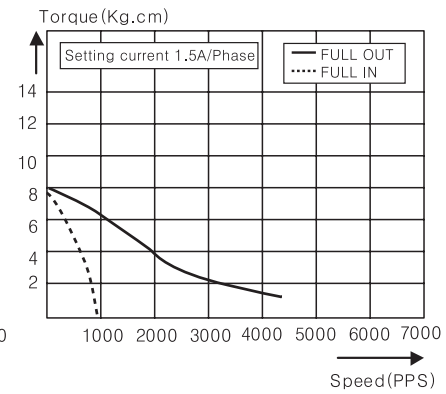
●A6K-M264(W)



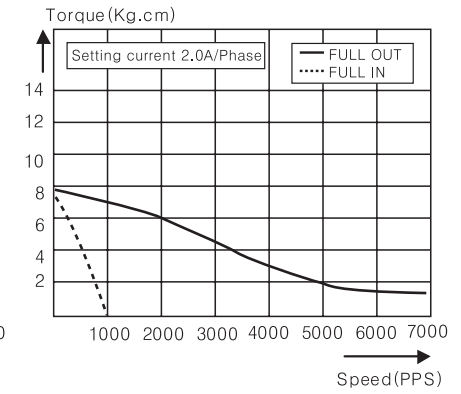
●A6K-G264(W)



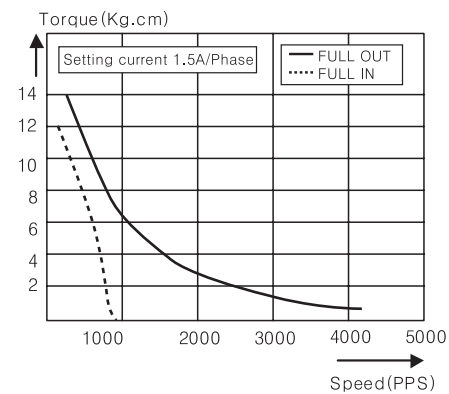
●A9K-M265(W)



●A9K-G265(W)



●A16K-M268(W)



●A16K-G268(W)

