

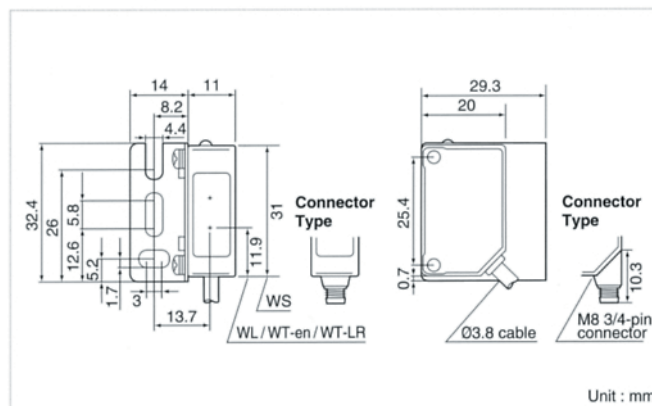
## Z series

Standard sensor with up-to-date functions and 12 meter scanning distance. 100G mechanical resistance generally applicable to tough uses.



■ Cable type  
■ Connector type

### Dimensions



### Specifications

Type			Z Series				
			Thru-beam	Retro-reflective	Diffuse reflective	Convergent beam	Transparent Detection
Model Number	Cable Type	NPN	ZT-1200N	ZR-350N	ZD-70N	ZD-L09N	ZR-Q200N
		PNP	ZT-1200P	ZR-350P	ZD-70P	ZD-L09P	ZR-Q200P
	M8 QD Type	NPN	ZT-1200CN	ZR-350CN	ZD-70CN	ZD-L09CN	ZR-Q200CN
		PNP	ZT-1200CP	ZR-350CP	ZD-70CP	ZD-L09CP	ZR-Q200CP
Sensing Range			12 meter	3.5 meter	700 mm	10 - 90 mm	2 meter
Hysteresis			-----	-----	20% max.	10% max.	-----
Supply Voltage			10 ~ 30 VDC incl. 10% ripple				
Current Consumption			20 mA max.				
Response Time			0.5 msec.				
Control Output			NPN or PNP Open Collector Transistor, 100 mA / 30 VDC Max.				
Operation Mode			Selectable Light-On or Dark-On operation				
Light Source			Red LED				
Sensitivity Adjustment			Single turn potentiometer				
Regulation			JIS/C4525, CE, CUL, VDE				
Indicators			Single Output Indicator				
IP Protection			IEC 144 IP67, VDE level 3				
Shock Resistance			100 G (1,000 m/s), X-Y-Z 3 ways				
Environment Illuminance			Sunlight: 10,000 lux, Incandescent Lamp: 3,000 lux				
Material			ABS case, PMMA lens				
Accessories			Mounting brackets	Mounting bracket Reflector # V-61	Mounting bracket		Mounting bracket Reflector # V-61

Note: Cables are not included with the QD sensor, please order separately.