

CX5000S / 13.56 MHz
FP3515RE



CX5000-S / 13.56 MHz
RF POWER SUPPLY
Operator's Manual



Copyright © 2005 by Comdel, Inc.

The information contained in this manual is proprietary to Comdel, Inc. and is protected by copyright and trademark laws. You may not modify, copy, reproduce, republish, post, transmit, or distribute in any way any material from this manual except as may be expressly permitted in writing by Comdel, Inc.

Comdel, Inc. • 11 Kondelin Road, Gloucester, MA 01930 • Phone: 978-282-0620 • www.comdel.com

Table of Contents

1	Safety Information	1
2	Description / Specification	4
	A. Electrical Specifications.....	4
	B. Protection Features.....	5
	C. Control Signals & Rear Panel Connections	5
	D. Mechanical Specifications.....	7
	E. Environmental Specifications	7
	F. Testing Specifications.....	8
	G. Packaging & Shipping Specifications	8
3	Unpacking and Inspection	9
4	Maintenance	9
5	Preparation for Use	9
	A. Line Requirements	9
	B. Cooling Requirements.....	9
	C. Installation Requirements	10
6	Operating Instructions	10
	A. Local Operation	10
	B. Remote Control Operation	11
	C. Serial Operation (Optional)	11
7	Theory of Operation	13
	A. AC Interlock System.....	13
	B. DC Power Supply	14
	C. Oscillator Control Board	14
	D. Driver.....	15
	E. Power Amplifier	15
	F. Combiners	16
	G. Directional Coupler Board.....	16
	H. CX Controller.....	16
8	Certification	17
9	Customer Service	19

List of Figures

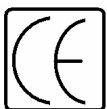
FP3515RX	CX5000S RF Block Diagram
FP6600RX	CX5000 208 VAC DC Supply Block Diagram
FA0900RX	AC Interlock schematic
FA0506RX	Hall Effect Current Monitor Assy schematic
FA0403RX	Oscillator Control schematic
FA0224RX	Driver assy schematic
FA0133	Directional Coupler assy schematic
FA0606RX	CX Interface assy schematic
FA0604RX	CX Microcontroller assy schematic
FA0605RX	Softkey Input Interface assy schematic
CXINTFC	CX Remote Interface definition

Before installing equipment, carefully read and familiarize yourself with the entire operations manual. Observe and obey all WARNING and CAUTION notes provided.

1 Safety Information

Warning Label and Safety Marking Explanations:

The following symbols and terms may be found on an instrument or used in this manual.



The CE mark indicates compliance with all currently applicable directives and standards.



This label indicates a general warning or caution condition.



This symbol indicates the presence of high voltages in or around the unit.



This symbol indicates that the component or circuit is short circuit protected.



This symbol indicates the presence of RF energy in or around the unit.



This symbol indicates a protective earth ground connecting point.



This label indicates a presence of high voltage in or around the equipment, which may cause severe injury or death. All appropriate precautions should be observed when installing, operating or servicing this equipment.



This label indicates the presence of Radio Frequency energy in and around the equipment, which may cause burns or other injuries. All appropriate precautions should be followed when installing, operating or servicing this equipment.

The **WARNING** heading used in this manual explains dangers that might result in personal injury or death. **Always read the associated information** very carefully before performing the indicated procedure.

The **CAUTION** heading used in this manual explains hazards that could damage the unit. Such damage may invalidate the warranty.

MUST – This word is understood to indicate a mandatory condition.

HIGH VOLTAGE – Voltages greater than 50 volts DC or 25volts AC and known to cause death or serious injury if contacted.

SERVICE – Any operation of maintenance, repair, calibration or similar activity other than the normal operation of the unit.

QUALIFIED SERVICE TECHNICIAN, QUALIFIED ELECTRICIAN, QUALIFIED PERSONELL These terms indicate persons specifically trained to install, service or other wise handle electronic equipment of the character and hazard potential of this unit.

End User Labeling

The system installer should obtain and apply all appropriate safety and warning labels required by the end user's local fire department jurisdiction and Occupational Health and Safety Administration over and above those supplied by the generator manufacturer.

Read And Understand This Section Fully Before Installing or Operating This Equipment.

WARNING: This equipment must be installed, operated and serviced only by trained, qualified persons.

General Safety Requirements



- **WARNING:** Hazardous Voltages and RF voltages are present inside this unit, which may cause injury or death. To prevent electrical shock and or RF burns, never operate this equipment with the covers removed. Never operate without an appropriate cable connected between the RF output connector on the rear panel and the load.
- **CAUTION:** There are no user or operator serviceable parts inside this equipment. Refer all service to a qualified service technician.
- This equipment must be bonded to Protective Earth (safety ground) prior to operating the unit. Safety ground connection must be made at the unit's rear panel designated 1/4" - 20 threaded ground stud. The ground wire should be a #14 awg or equivalent (minimum) green/yellow lead.
- Replace fuses only with identical type and rating parts. Installation and connection of this equipment must only be performed by a qualified electrician.



- **HEAVY OBJECT CAUTION:** A heavy object caution exists for equipment weighing more than 51 lbs or 23 kg. Use lifting aids to install unit, such as chain lifts or hooks and straps, attached to the four handles at the sides and front of unit. Guide unit into final location using care to keep hands and body parts clear of unit.

Interlock System

- The low voltage (24 V) safety interlock circuit is designed to disable the unit in the event of an interlock fault condition. At a minimum, interlock protection is located at the removable top cover, bottom cover and RF output connector safety cover.
- End user's system should provide indication to the operator of the interlock fault condition.
- Low voltage power for the interlock circuit is supplied by a step down transformer located inside the unit. This transformer is designed to provide safe low voltage operation and provide isolation from the main AC line.

Lockout/Tagout

Prior to performing system maintenance, repair or other service operations the generator must be locked out and tagged out to prevent accidentally energizing the system.

The following steps should be performed only by a qualified service technician:

- Disconnect AC input power to the generator.
- Mount a suitable "Clamshell" type lockout device to the AC input plug such as a Hubbell # HLD2 or equivalent. Follow all manufacturers' directions for the lockout device.
- Secure the lockout device with an appropriate padlock or safety lock.
- Apply a lockout warning tag to the lock out device.

The Lockout / Tagout device should not be removed until system service is completed and it has been determined appropriate to reconnect and operate the generator.

2 Description / Specification

The CX5000S/13.56 RF amplifier operates at a frequency of 13.56 MHz. The power source produces maximum transfer of power into a 50 ohm resistive load and is designed to withstand large deviations in load impedance without failure. The primary features of the CX5000S series are its solid-state design, small physical size and reliability.

CX5000S series power amplifiers can be supplied with internal frequency sources or may be driven from external frequency sources having a 50 ohm output and a digital drive level of 0-5 V.

The CX5000S series amplifier is constructed with two sections:

- The DC power section is contained in a separate 10.5"(267mm) x 19"(483mm) rack unit. This section includes all of the filter capacitors, rectifiers and regulators as well as the three-phase 208 VAC power transformer. The bridge rectifiers are mounted on a water-cooled heatsink. These components are operated at about half of their rated outputs to insure the high reliability of this section.
- The RF section of the amplifier is mounted in a separate 5.25"(133mm) x 19" (483) rack unit. This section consists of the internal/external oscillator frequency control board (OCB), water-cooled driver, four water-cooled PA1250S power amplifiers, an RF combiner, and an output matching network/harmonic filter. All components are used well below their dissipation ratings for long life and low maintenance operation.

A. Electrical Specifications

Description	Specifications
AC Input Voltage:	190-225VAC; no neutral; three phase with ground.
AC Line Frequency:	50/60Hz nominal; 49 to 61 Hz range
AC Input Current:	30 amps maximum.
Output Characteristics:	<ul style="list-style-type: none"> • 0 to 5000W continuous forward power at the unit's rear bulkhead RF connector into a 50 Ohm load. • The forward power out is to track the command setpoint for any load conditions where the reflected power is less than: 600W.
Accuracy/Regulation:	+/- 3.0% of setpoint, from 10% to 100% max output, as measured by either the actual output power and/or the forward analog read back signal.
Linearity:	+/- 3.0% deviation from a straight line for successive requested setpoint power increment changes, from 10% to 100% max output, as measured by either the actual output power and/or the forward analog read back signal.
Short Term Stability:	+/- 1.0% for any given output power setpoint during one continuous hour of output.
Long Term Stability:	+/- 5.0% for any given output power setpoint during 3 years of continuous output.
Rise Time:	Less than 100ms; from leading edge of enable signal to 90% of power level requested.
Zero Setpoint:	Less than 1.0W actual output power and less than 1.0W read back power when setpoint signal is at zero or at a negative voltage.
Frequency stability:	13.56 MHz +/- 0.005%
Output Filtering:	(for full power into 50 ohms)
Harmonic Signals:	Less than -30dBc
Spurious Signals:	Less than -40dBc
AM & FM Noise: (@ 50 KHz offset)	Less than -40dBc

B. Protection Features

Description	Specifications
Mismatch Protection:	Continuous operation into any impedance mismatch condition without damage or malfunction; forward power foldback shall occur within 500us if reflected power exceeds 600 Watts.
AC Line Protection:	A manually resettable circuit breaker on the front panel of the DC unit opens upon overcurrent conditions. Rear panel fusing is provided to protect the interlock loop power (F1) and DC unit cooling fan (F2).
RF Output Power Connection Interlock:	A Hard-wired interlock that disables the input AC power contactor upon removal of either of the RF output cables.
Safety Interlock:	Disables the input AC power contactor via either of the control I/O connection signals; open between Pins 10 & 23.
Over Temperature Fault:	Output disabled on high internal temperature.
Control Signal Protection:	Unit not to be damaged if a short circuit or up to 30 volts AC or DC is placed between any input signal, return signal, and ground.

C. Control Signals and Rear Panel Electrical Connections:

Description	Specifications
Signal Input Impedance:	10K Ohms, minimum.
Signal Input Isolation:	1000VAC minimum to the A/C supply line.
Rear Panel Electrical Connections	
DC Section Input Power Connection:	Line cord to be 8/4 flexible stranded bare copper.
RF Section Output Power Connector:	Type "LC" female coaxial bulkhead connector, standard.
RF Section Control I/O Connector:	25 pin sub miniature "D" type (female) receptacle.
Chassis Ground:	¼" brass bolt, washer & hex nut on back panel.

Control signals and pinout descriptions:

Signal Pin	Name	Type	Description
1	Max Power (emitter)	DO	Active when output = 5000 Watts forward
14	Max Power (collector)	DO	
2	Ref Power Output	AO	0 to +10VDC = 0 to 5000W linear.
15	Ref Power Output Return	AO	
3	Fwd Power Output	AO	0 to +10VDC = 0 to 5000W linear.
16	Fwd Power Output Return	AO	
4	RF Power Enable In (anode)	DI	Activated enables RF output
17	RF Power Enable In Return	DI	
5	Remote Setpoint Input	AI	0 to +10VDC = 0 to 5000W linear.
18	Remote Setpoint Input Return	AI	
6	Unregulated DC Output		15-30 VDC.
19			Return for Pin 6
7	RF Power On (emitter)	DO	Active = RF ON.
20	RF Power On (collector)	DO	
9	Overtemp (collector)	DO	Indicates status of heatsink temperature, Active = HOT.
22	Overtemp (emitter)	DO	
10	Interlock Loop	Interlock	Safety interlock jump to 23
23	Interlock Loop Return	Interlock	Jump to 10

NOTE: all unlisted pins are not connected.

D. Mechanical Specifications

Description	Specifications
RF Unit Dimensions:	19"W x 5.25"H x 24"D (48.3cm x 13.3cm x 61cm)
Weight:	55 lbs. (25 kg)
Mounting:	Standard 19" EIA rack mounting adapters with 5.25"(133mm)H x 10.5"(267mm)W front panel.
Color and Finish:	All surfaces shall painted or have a coated finish such as gold zinc chromate, gold alodyne, or equivalent.
Front Panel Indicators	<ul style="list-style-type: none"> All front panel indicators will be displayed on a 20 X 2 character alpha-numeric display. All settings (in local control mode) will be made from a single rotary encoder or four soft key actuators.
Handles (RF unit):	Front Panel: Two handles (left & right) to be mounted on the front panel exterior, evenly spaced on center.
Warning Labels:	<ul style="list-style-type: none"> Safety Labels for hazardous voltages, Heavy Object, and Caution for lifting by water fittings are to be provided on operator visible areas of the generator. IEC standard symbols in user visible areas for start, stop, enable and cautionary conditions, PE ground, high temperatures and RF energy present. Special marking available at customer's specifications

E. Environmental Specifications

Operating Temperature & Humidity	
Operating ambient temperature/humidity/air pressure:	+10 to +40° C (50 to 104° F) ambient, 5-85% R.H. (non-condensing, no formation of ice), 86-106 kPa. Temperature, humidity and air pressure operating range class 3K3 per prEN50178.
Inlet Water Cooling Requirements:	3 GPM (11 l/m) @ 414 kPa (60 psi) max, 35° C max. (See tables below for detailed requirements)
Coolant Type:	Water
Coolant Fittings:	3/8" Swagelok male for RF section and 1/2" NPT female for DC section
Storage and Transportation	
Storage temperature/humidity/air pressure:	-25 to +70° C (class 1k4 per prEN50178), 5 - 95% humidity (non-condensing, no formation of ice, class 1k3), 70-106 kPa (class 1k4).
Transport temperature/humidity/air pressure:	-25 to +70° C, 5 - 95% humidity, 70-106 kPa (class 2k3).

50% Duty Cycle Operation: (@5000 Watts)

Temp	Minimum Flow (GPM)	Minimum Flow (LPM)
10	.8	3.0
15	.9	3.5
20	1.1	4.0
25	1.2	4.5
30	1.3	5.0
35	1.5	5.5

Continuous Operation: (@5000 Watts)

Temp	Minimum Flow (GPM)	Minimum Flow (LPM)
10	1.6	6
15	1.9	7
20	2.1	8
25	2.4	9
30	2.6	10
35	2.9	11

This equipment has been designed to be compliant with FCC Part 18 emission standards for EMI/RFI radiation. Radiated emissions shall also not exceed maximum levels permitted by ANSI C95.1-1982 standards on safety levels with respect to human exposure to RF and electromagnetic fields from 300KHz to 100GHz.

F. Testing Specifications

Production Acceptance Test: Each unit will be required to "pass" production acceptance testing and a "Final Test Report" will be generated to document results.

Production Acceptance Testing process shall include as a minimum: Complete Parametric/Functional Tests covering: line regulation, calibration, linearity, burn-in, over-temp test, open circuit test, MAX power test, harmonic distortion, AC ripple, and remote interface tests. Data sheet for each generator to be shipped with unit.

G. Packaging & Shipping Specifications

1. Accessories Supplied

- Final test results
- Operating manual
- RF output interlock cover
- CX5K 40VDC ground interconnects
- CX5K 40VDC buss interconnects
- 5K DC control cable 15 pin sub-D
- CX5K DC input cover

2. Shipping

NOTE: If there is a conflict between this document and customer Purchase Order then the latter supersedes.

NOTE FOR REPAIRS: Unless repairs have accessories included with them and have them listed on the Return Material Authorization (RMA) Tag, returned materials will not have to fulfill procedural requirements for accessories.

3 Unpacking and Inspection

1. Carefully unpack the unit and inspect for any obvious signs of physical damage that might have occurred during shipment.
2. Check the outside of the unit for missing or loose mounting screws or broken parts.
3. If there is shipping damage or the unit fails to operate properly upon receipt, report damage to the carrier immediately and notify Comdel factory within 30 days of receipt of unit. Failing to report any damage within this time period is the same as acknowledging that the unit was received undamaged.
4. If returning the product for repair you must:
 - Return the unit in the original, or equivalent, shipping container
 - Receive a Return Materials Authorization (RMA) number from the factory prior to the return of the product to Comdel for repair
 - Place RMA numbers clearly on the shipping container or on the packing slip

CAUTION: Breaking the seal or removing the warranty decal from this unit will void the warranty. If internal damage is suspected, contact factory for assistance.

4 Maintenance

The CX5000S is designed to run unattended for long periods of time. Should service be required, the system is designed for quick repair.

After a time, scale may build up on the inside of the cooling tubes. This could greatly reduce the cooling capacity of the system. It is recommended that the system be flushed with a descaling agent. A cleaning agent that does not damage copper or stainless-steel should be chosen.

5 Preparation for Use

A. Line Requirements

The CX5000S is designed to operate from a 208 VAC three phase line. The system will still function within specifications when the line voltage fluctuates between 190 volts and 225 volts. Voltages over the recommended 208 VAC, however, reduce the safety margins designed into the system and should be avoided. The system draws a maximum of 30 amps per phase when used to drive a load of 50 ohms. Under conditions of mismatch the amplifier could draw slightly more current.

B. Cooling Requirements

The ambient air temperature should not exceed 35° C. There should be enough room over the top of the amplifier and along the sides to permit an unobstructed airflow through the unit. Water temperature should not exceed 35 degrees C and should not fall below a temperature where excess condensation could develop within the unit. Water volume should be at least 3 GPM and pressure kept below 60 PSI.

Note: See detailed requirements under Section 2E "Environmental Specifications."

C. Installation Requirements

CAUTION: When operating the CX5000S all covers and panels should be intact. This insures proper airflow around the components as well as preventing electric shock or RF burns. Power line voltage will be present at the circuit breaker, input connector and line filters unless power cord has been removed.

1. Connect water lines to the unit and run water through unit. (60 PSI max).
2. Connect a 50 Ohm load to the RF output of the amplifier.
NOTE: Load and coaxial cable should have a minimum 5000 Watt power handling capacity.
3. Connect DC unit to RF unit using the 3 provided buss bars and the 3/8-16 brass nuts and lockwashers.
4. Connect the 15 pin subminiature D cable between the RF and DC units.
5. With circuit breaker "OFF" connect the power line to the unit.

6 Operating Instructions

The CX5000S may be operated either locally at the front panel or remotely through the 25 pin subminiature D connector (J1) on the rear panel

A. Local Operation

NOTE: AC interlock Pins 10-23 must be jumpered and RF ENABLE Pins 4-17 must be energized for the unit to be operated. RF ENABLE can be energized by supplying > 5 volts to Pin 4(+) and 17(-). Pins 6(+) and 19(-) are a 15V or 24V source that can be used for this purpose. See CX INTERFACE DEFINITION Figure.

1. Check to see that coolant is running through the unit and that a proper RF load is connected to the RF output connector at rear of unit.
2. Connect unit to 208VAC nominal, 3 phase and turn on main power breaker at front of the DC unit.
3. Verify that LED at red pushbutton (AC OFF) marked 'O' LED is on. If LED is off, then check AC line power. If LED is flashing then check RF output connector interlock switch, top cover interlock switch, or interlock loop, Pins 10 and 23 of rear panel connector.
4. Push AC ON green pushbutton marked 'I'. The AC ON LED should be illuminated after the mains contactor closes.
5. The front panel display should show the model/frequency of the unit and the software version number for the first two seconds. The front panel display should show 'REM' for remote control. Push the mode select key (>>) on the front panel to select LOCAL control.
6. Enable RF by pushing the blue RF button on the left side of the front panel. The RF button should illuminate, the display flash 'RF ON', and readings of forward and reflected power should appear. If the display shows 'CHECK RF INTERLOCK', this means that the RF enable Pins 4 and 17 of rear panel connector is not energized. This can be done by connecting Pin 4 to Pin 6 (+15/24V) & 17 to 19 (RET).
7. RF is disabled by pushing the RF button again, by removing RF interlock by disconnecting Pin 4 or 17 of rear panel connector, or by interrupting the AC mains via the AC interlock loop, the stop softkey, or the circuit breaker located on the rear panel.
8. The CX5000S regulates forward power based upon the setpoint selected by the large data encoder knob on the front panel.
9. The CX5000S can be programmed to linearly ramp up and down the RF output power when RF is enabled or disabled. This is done by pushing the function select softkey (>) once to adjust the upramp time, and once more (>) to adjust the down ramp time. The times are programmable from .1 to 10 seconds, in .1 second increments through turning the data encoder knob on the front panel. Pushing the function select softkey a third time (>) brings the data encoder knob adjustment back to forward power setpoint.

10. An overtemp condition due to lack of coolant flow or high coolant temperature will automatically disable RF the CX5000S. The front panel display will show 'OVERTEMP' for about 2 seconds if the RF ENABLE softkey is pushed. RF will not be able to be turned on until proper coolant flow/temperature is established.

B. Remote Control Operation

- 1-4. Refer to Figure CX REMOTE INTERFACE for the electrical interface specifications. For remote control operation follow the first four procedures for local control as listed above.
5. Remote operation is the power-up default mode. If the current mode of operation is LOCAL, then push the mode select key (>>) until the display shows 'REM' in the upper left corner OR restart the unit by turning AC off then back on.
6. Enable RF by energizing the RF ENABLE Pins 4(+) and 17(-) of the rear panel connector. The RF button should illuminate, the display flash 'RF ON', and readings of forward and reflected power should appear.
7. The voltage on Pin 5(+) and 18(-) of the J1 connector will determine the output power level. A voltage of 0 to 10 volts DC across Pins 5 and 18 will linearly correspond to an RF output of 0 to 5000 watts.
8. Reflected and forward power can be monitored remotely through Pins 2(+), 15(-) and 3(+), 16(-) respectively. Both of these balanced analog outputs are 0 to 10 VDC linearly corresponding to 0 to 5000 watts of RF output.
9. An overtemp condition as stated in #10 above in LOCAL will also result in the 'closure' of the OVERTEMP DIGITAL OUTPUT, Pins 9 and 22 of the rear panel connector. The digital output opto-isolator will be turned on.
10. When RF is present at the RF output connector, the POWER DELIVERED DIGITAL OUTPUT, Pins 7 and 20, will also be turned on.
11. When the SETPOINT IN analog input has 10V or above meaning full power is requested, the MAX POWER LIMIT DIGITAL OUTPUT, Pins 1 and 14, will be turned on.

C. Serial Operation (Optional)

The following is a description of the RS-232 ASCII instruction set to operate the CX series of RF generators. The baud rate is selectable via a DIP switch on the uP control PCB behind the front panel and is factory set to 9600 baud, N, 8, 1, with echo.

1. All incoming instructions need to be terminated with a carriage return (HEX 'D') except for the ATTENTION (!) and EXIT (#) commands.
2. The CX interface does not normally require handshaking for it's input because it is interrupt driven with a 1K buffer. Handshake control of its output is optional.
3. The (PROMPT) response is defined as: <CR><LF> > or HEX D, A, & 3E

Instruction	Function	Response
! (NO <CR>)	ATTENTION	(PROMPT)
SPxxxx	SET RF POWER	(PROMPT)
ER	ENABLE RF	(PROMPT)
DR	DISABLE RF	(PROMPT)
P+xx.x	SET POWER UP RAMP TIME	(PROMPT)
P-xx.x	SET POWER DOWN RAMP TIME	(PROMPT)
RF	READ FORWARD POWER	xxxx (PROMPT)
RR	READ REFLECTED POWER	xxxx (PROMPT)
EE	ENABLE ECHO	(PROMPT)
DE	DISABLE ECHO	(PROMPT)
# (NO <CR>)	EXIT	CR><LF>BYE

4. Function descriptions:

! - ATTENTION

The '!' command redirects control of the RF generator from either local (front panel) or analog remote (15 pin 'D' connector) to the serial port (9 pin 'D' connector). There will be no response from the CX from any other ASCII codes sent while in local or analog remote modes. Upon receipt of the ASCII '!', the CX will disable RF, set power setpoint to 0 watts, disable echoing of ASCII characters, and issue a PROMPT. The CX is now ready to receive ASCII commands via the serial port and will not respond to local or analog remote commands. This command does not require a carriage return <CR>.

SPxxxx - SET RF POWER

This command provides for forward power setpoint (in watts). The syntax allows up to four digits (xxxx) with leading zeroes OK (leading zeroes not required). If a setpoint value is received that is greater than the maximum output of the generator, the setpoint will be set to maximum.

This command only adjusts the setpoint for the CX and does not enable or disable the RF power.

ER - ENABLE RF

This command enables RF power at the preprogrammed setpoint SPxxxx (SET RF POWER). The power out will start at 0 watts and increase linearly to the setpoint over the period of time as set by P+xx (UPRAMP TIME).

If the external RF interlock connection is interrupted (25 pin rear panel analog remote interface connector), the RF output will not be enabled, and the CX5000S will respond with the message: "CHECK RF INTERLOCK". If RF output is already turned on when the RF interlock is interrupted, the CX5000S will respond with the same message and disable RF output.

If at any time the CX5000S overheats, the unit will disable RF and respond with the message: "OVERTEMP".

DR - DISABLE RF

This command disables RF power without affecting the setpoint. The power out will decrease from setpoint to 0 watts linearly over the period of time as set by P-xx.x (DOWNRAMP TIME).

P+xx.x - UPRAMP TIME

This command allows up to three digits with an optional decimal point (xx.x) to set the RF power upramp time as described above in the ER (ENABLE RF) command.

The units of time is in seconds and is adjustable from .1 to 10 seconds. The default time is .1 second unless previously set from either the serial port or local control (front panel).

P-xx.x - DOWNRAMP TIME

This command allow up to three digits with an optional decimal point (xx.x) to set the RF power downramp time as described above in the DR (DISABLE RF) command.

The units of time is in seconds and is adjustable from .1 to 10 seconds. The default time is .1 second unless previously set from either the serial port or local control (front panel).

RF - READ FORWARD POWER

This command returns the forward power of the CX.

The returned value can be from one to four digits and the units will be watts. The PROMPT as described above will follow the value returned.

RR - READ REFLECTED POWER

This command returns the reflected power of the CX.

The returned value can be from one to four digits and the units will be watts. The PROMPT as described above will follow the value returned.

EE - ENABLE ECHO

This command enables the serial port to echo all ASCII characters sent. The start default for the echo function is programmable by the serial port configuration switch on the microcontroller PCB mounted on the back of the front panel, switch #1.

DE - DISABLE ECHO

This command disables echoing of characters.

- EXIT

Upon receipt of this ASCII character the CX will disable RF power, set the power setpoint to zero, issue a "<CR><LF>BYE" response, then redirect control of the CX to the mode the unit was previously in when the attention command (!) was given. Local control can now be commanded from the front panel mode select button.

This command only functions after a PROMPT and does not require a carriage return. The '#' will not be recognized buried in or tagged at the end of another command.

The CX will no longer recognize serial port ASCII characters EXCEPT for the attention '!' character.

7 Theory of Operation

The CX5000S/13.56 is a high frequency power amplifier for use in OEM applications. The power sources consist of an AC Interlock system, DC power supply, five stages of gain with associated control systems and monitoring circuits.

The radio frequency signal is generated locally in the Oscillator Control Module. From this module the signal goes to the driver. The driver further amplifies and splits the signal into eight channels of equal phase and magnitude. These eight signals are then amplified in four PA1250S power amplifiers. The signals are then added together in a four-way hybrid combiner. From the combiner module the signal is matched to 50 ohms through a low-pass filter. Control signals are obtained from the output signal as it passes through the power monitor board to the output RF connector. The front panel CX Controller monitors the user input from either the front panel or rear connector, and monitors the control signals from the RF output power monitor, PA voltage monitor, PA current monitor, and PA overtemp switch. Refer to Figure FP3515RX CX5000S BLOCK DIAGRAM to see how the individual modules are connected together.

A. AC Interlock System



WARNING: Never attempt to operate this equipment with any of the interlocks bypassed.

The AC mains to the main power transformer is switched via contactor K1, controlled by the AC INTERLOCK PCB (Figure FA0900RX) mounted on the front panel behind the ON/OFF softkeys. AC power to this interlock system is supplied by 24VAC transformer which is energized when circuit breaker CB1 on the back panel is thrown. There are three fuses in the interlock circuitry: two mounted on top of T2 (208VAC input side) inside the CX5000S and one mounted on the AC INTERLOCK PCB itself (24VAC output side).

The AC INTERLOCK PCB supplies the logic to the AC mains control contactor to start and stop the CX5000S via the front panel softkeys. The PCB's start/stop circuitry is done with relay logic for safety. The active circuitry (U1A) causes the OFF softkey lamp to flash if the interlock loop is broken.

The interlock 'loop' for the CX5000S includes the rear panel I/O 25 pin 'D' connector, the top cover, and the RF output connector cover.

B. DC Power Supply

The DC supply consists of a three-phase transformer, three-phase, full-wave, bridge rectifier and a low-pass filter for the main power voltages. There are two single-phase bridge rectifiers and filters feeding both a positive 15 volt, negative 5 volt, and positive 5 volt regulators. These voltages are used in the control circuitry.

The outputs of this stage are:

1	44 VDC	Unloaded
	37 VDC	120 Amps (5000W RF output)
1	+15 VDC Regulated	250 mA max
1	-5 VDC Regulated	250 mA max
1	+5 VDC Regulated	1A max

The high current required by the RF power amplifiers (PAs) is monitored by the HALL EFFECT CURRENT MONITOR PCB (Figure FA0506RX) mounted on the driver/bridge rectifier heatsink block, which is mounted between the front panel and the RF POWER AMPLIFIER heatsink block. This PCB uses four Hall effect devices to separately monitor the DC current feeding the four 1250 watt RF power amplifiers.

C. Oscillator Control Board (OCB)

The oscillator control board (Figure FA0403) has six parts, oscillator clock, three stages of gain, circuitry for output power control and monitoring circuitry. The oscillator clock is a TTL compatible output device that determines the frequency of operation. This square signal is amplified by three tuned stages of gain, producing a relatively clean sinusoidal 1 watt output. The DC voltage that powers the last gain stage is adjustable through control transistor Q5 to control the RF output level of the OCB.

The gain control circuitry smoothes output control and stabilizes output power against line and load variations and limits output power during high VSWR conditions. Control is achieved through the LM 356 operational amplifier, IC1. This op-amp compares the forward power signal (from the power monitor board) to that of the DC reference level applied to the non-inverting input. The reference level is set either from the front panel potentiometer or from Pin 5 of the J1 connector.

The LM 356 drives the gain control transistor, Q5, until enough signal from the forward power detector in the directional coupler is applied to the inverting input to the op-amp. When the inverting signal equals the reference voltage on the non-inverting input the drive level holds constant.

The non-inverting input is also the point to which some of the protection circuits connect. The CX controller pulls this point down when load conditions bring the amplifiers near their over-voltage, or over-current limits. This limits the drive to the amplifiers until the match between the generator and the load is corrected.

The reflected power limiter performs in the same way when the signal from the reflected power detector in the directional coupler reaches a pre-set limit. The Q6 transistor does the pull-down function until SWR conditions are within safe limits. The OCB also includes linearizing circuitry allowing both forward and reflected analog power level signals to appear at connector J1 as linear presentations of the incident and reflected RF output

power. Two squaring ICs U2 and U4 are used to condition the square law signals from the directional couplers.

Typical Specifications (OCB)

Output load impedance	50 ohms
Output RF power level	1 watt (max)
Input power Pin 10	+15 VDC at 170 mA max
Pin 8	-5 VDC at 24 mA max
Remote power control input impedance	
Pin 2 on J1	2 K ohm
Reflected power limit	Internally set to 300-400W

D. Driver

The CX5000S driver is a two-stage amplifier with feedback. The first 'Class C' transistor amplifies a 1 watt (typical) input from the OCB to about 10 watts. The circuitry between the two stages include two wideband impedance matching transformers and a loss section. The loss section provides added stability to the system and isolation between stages. The second Class 'B' push-pull stage of the driver sends 100 watts (max) to the hybrid output splitters. These transformers split the signal into eight equal phase and magnitude outputs of 12 watts each. The balancing resistors on the transformers allow for any variances in input characteristics of the four amplifiers. There are no adjustments or tuning required for this module.

Typical Specifications (Driver)

Gain	18 dB
Input power	1 watts (max)
Output power	12 watts x 8
Input impedance	50 ohms
Output impedance	50 ohms
Collector voltage at full power *	40 VDC
Current at full power *	5 A

* 5000 watts into 50 ohm resistive load

E. Power Amplifier

The CX5000S RF power amplifier consists of four PA1250S power amplifiers. Each PA1250S uses eight power transistors arranged in four pairs of push-pull Class "C" amplifiers. The input power from the driver is matched with a wideband transformer, T1. The driver input is then split into four signals and fed into four push-pull transformers, T2. Each of these transformers drives the bases of two power transistors, Q1-Q8. The transistors are operated common emitter with feedback.

The collector signals are coupled by two push-pull hybrid combiners. The output of these combiners is once again added together in a two-way hybrid combiner. There are no adjustments on the PA1250S.

Typical Specifications (PA1250S)

Gain	15 dB
Input power	20 watts
Output power	1250 watts (min)
Input impedance	50 ohms
Output impedance	50 ohms
Collector voltage *	37 VDC
Current draw *	120 ADC

* At 5000 watt system output into 50 ohm resistive load

F. Combiners

The combiner block is an integral part of the power amplifier and adds the outputs from the four 1250 watt amplifiers in a four-way hybrid transformer. High power balancing resistors allow for any output differences between amplifier outputs.

Input impedance to the combiner is 50 ohms and the output is at 12.5 ohms. The signal passes through a four element low-pass impedance matching/filtering network. This network/filter provides a signal of the correct impedance and low harmonic distortion to the Power Monitor Board.

G. Directional Coupler Board

The directional coupler board is a detector which produces voltages which are proportional to the square of both forward and reflected power. The signals from the two detectors are produced from current and voltage taps off the output line. The forward and reflected signals are fed into the OCB where they are linearized. They are then fed to the CX controller where they are reproduced to the remote interface connector and displayed on the front panel. The reflected power signal is only present when the generator is driving a load that is not purely resistive, or not 50 Ohms. This signal is also used to drive the OCB VSWR shutdown circuitry.

H. CX Controller

The CX controller is comprised of four PC boards mounted to the left side of the front panel:

1. CX INTERFACE PCB

The function of the CX Interface PCB (Figure FA0606RX) is to condition all of the analog and digital inputs and outputs for the CX Microcontroller. This PCB board also provides the protection control circuitry to limit forward power in cases of high PA current or high PA RF voltage. This protection function is handled by U1.

2. CX MICROCONTROLLER PCB

This PCB (Figure FA0604RX), mounted under the CX INTERFACE PCB, contains a 16 bit microprocessor, memory, digital I/O, and analog I/O to control and monitor all activities of the CX5000S. If for any reason the program is terminated or gets lost, the watchdog timer U6 automatically restarts the system. U6 also monitors VCC for low voltage conditions. If VCC drops below 4.5V, the system is shut down via uP reset line, U1-71.

If the optional RS-232 serial port is utilized, U7 and associated components supplies the interface.

U14 provides the 5V or 10V reference for the A/D (U11) and D/A (U13) converters.

3. SOFTKEY INPUT INTERFACE PCB

This PCB (Figure FA0605Rx) is mounted under the CX MICROCONTROLLER PCB and contains the softkey sense pads and buffer circuitry to interface all front panel user interface to the CX Micro controller.

4. 20 x 2 CHARACTER ALPHA NUMERIC FLORESCENT DISPLAY PCB

This PCB, also mounted under the CX MICROCONTROLLER PCB, provides the display, high voltage power supply, drive circuitry, and microprocessor to interface the 20 x 2 character display to the CX Micro controller data bus.

8 Certification

1. This unit carries the ETL safety compliance mark to UL standard UL-1012.
2. This unit is SEMI F47 voltage sag immunity tested.



Intertek Testing Services
ETL SEMKO

AUTHORIZATION TO MARK

This authorizes the *application* of the *Certification Marks shown below to the Product Covered (also to the multiple listee model identified on the correlation page of the Listing Report where applicable) when made in accordance with the Description and under the conditions set forth in the Certification Agreement and Listing Report:*

Applicant: Comdel Inc., 11 Kondelin road, Gloucester, MA 01930

Contact: Mr. Bob Dettorre

Manufacturer: Same as Applicant

Party Authorized To Apply Mark: Same as Manufacturer

Report No.: J20031818

Report Issuing Office: Boxborough

Product Covered: *Model CX 5000x, CX 4000x*

Description: The product covered by this report is RF Generator, for internal use.

Standard(s): UL 1012 Sixth Edition

This document is the property of Intertek Testing Services and is not transferable. Only the Applicant may reproduce this document. The certification mark(s) may be applied only at the above noted location of the Party Authorized to Apply Mark.



Authorized by:

William T. Starr
William T. Starr - Certification Manager

Date:

11/19/02

Control Number:

2001447

Intertek Testing Services NA Inc.
165 Main Street, Cortland, NY 13045
Telephone 800-345-3851 or 607-753-6711 Fax 607-756-6699

9 Customer Service

Comdel field services, technical support, and repair services are available to all customers and for both warranty and non-warranty products. When sending equipment to the factory for service or calibration, you need a Return Material Authorization (RMA) number to ensure that we can properly track your equipment.

Technical Support

Technical support is available by phone during regular business hours at any one of our worldwide field offices or authorized agents.

Comdel Support on www.comdel.com

The Comdel website offers a complete list of sales and service offices, product troubleshooting tips through the Frequently Asked Questions (FAQ) page, an online request form for RMA numbers, and access to RF & DC product manuals.

Factory Service & RMA Information

Comdel field services, technical support, and repair services are available to all customers and for both warranty and non-warranty products. When sending equipment to the factory for service or calibration, you need a Return Material Authorization (RMA) number to ensure that we can properly track your equipment.

Obtaining an RMA Number

- To complete an online request for an RMA number log on to www.comdel.com and click on Factory Service under the Sales & Service Menu or for direct access go to <http://www.comdel.com/pages/sales/rma.php4>
- Call 978-282-0620 or 800-468-3144. If this is a machine-down situation, call the factory immediately.

Note: We will respond to all e-mail requests by the next business day.

Customer Support and Worldwide Office Contacts

For customers located within the United States, you can reach us by phone, fax, or e-mail.

Corporate Headquarters ♦ (Authorized Repair Depot)

11 Kondelin Road
Gloucester, MA 01930
Phone 800-468-3144 or 978-282-0620 (M-F 8:00 a.m. - 5:00 p.m. EST)
Fax: 978-282-4980
E-mail: info@comdel.com

Comdel US Regional Office

Comdel California, USA ♦ (Authorized Repair Depot)

Phone: 408-727-5254
Fax: 408-727-4433

For customers located outside the United States, please contact your local Comdel office or Distributor. (Consult attached directory.)

International Support

We currently provide authorized product repairs and technical support through the following U.S.A. and International Comdel locations marketed with ♦ Authorized Repair Depot (ARD). These offices have experienced technicians that can assist in arranging for product returns or on-site assistance.

The Comdel authorized repair depots stock parts and test equipment that support most Comdel products. Customers are encouraged to discuss specific service support needs with their local Comdel office to ensure prior product support preparation is arranged.

Other Comdel sales and service distributors are available to support facilitating return of Comdel products to the most appropriate service repair depot.

Comdel authorized depots offer application support, RF training, and product design assistance. All are fully supported by the product marketing and engineering team at Comdel's headquarters.

International Offices

EUROPE

Comdel United Kingdom ♦ (ARD)
Phone: +44-1256-766914 or +44-1256-766917
Fax: +44-1256-766915
Email: steve_ottaway@comdel.com

MIDDLE EAST

Israel
Odem Scientific Applications Ltd.
Phone: +972-8-9366101
Fax: +972-8-9366102
Email: ori@odemltd.com

ASIA

Comdel Seoul, Korea ♦ (ARD)
Phone: +82-2-565-4780
Fax: +82-2-564-5398
Email: eric_joo@comdel.com

Singapore/Malaysia

DAL Engineering (S) PTE, Ltd. ♦ (ARD)
Phone: +65-6-743-5538
Fax: +65-6-743-5539
Email: david_wong@comdel.com

Taiwan, ROC

FairTech Corp. ♦ (ARD)
Phone: +886-3-5723257
Fax: +886-3-5727302
Email: farcorp@ms25.hinet.net

China

Beijing Leyfond Vacuum Tech. Co., Ltd.
Phone: +86-10-82843366
Fax: +86-10-82842835
Email: fangliwu@leyfond.com

JAPAN

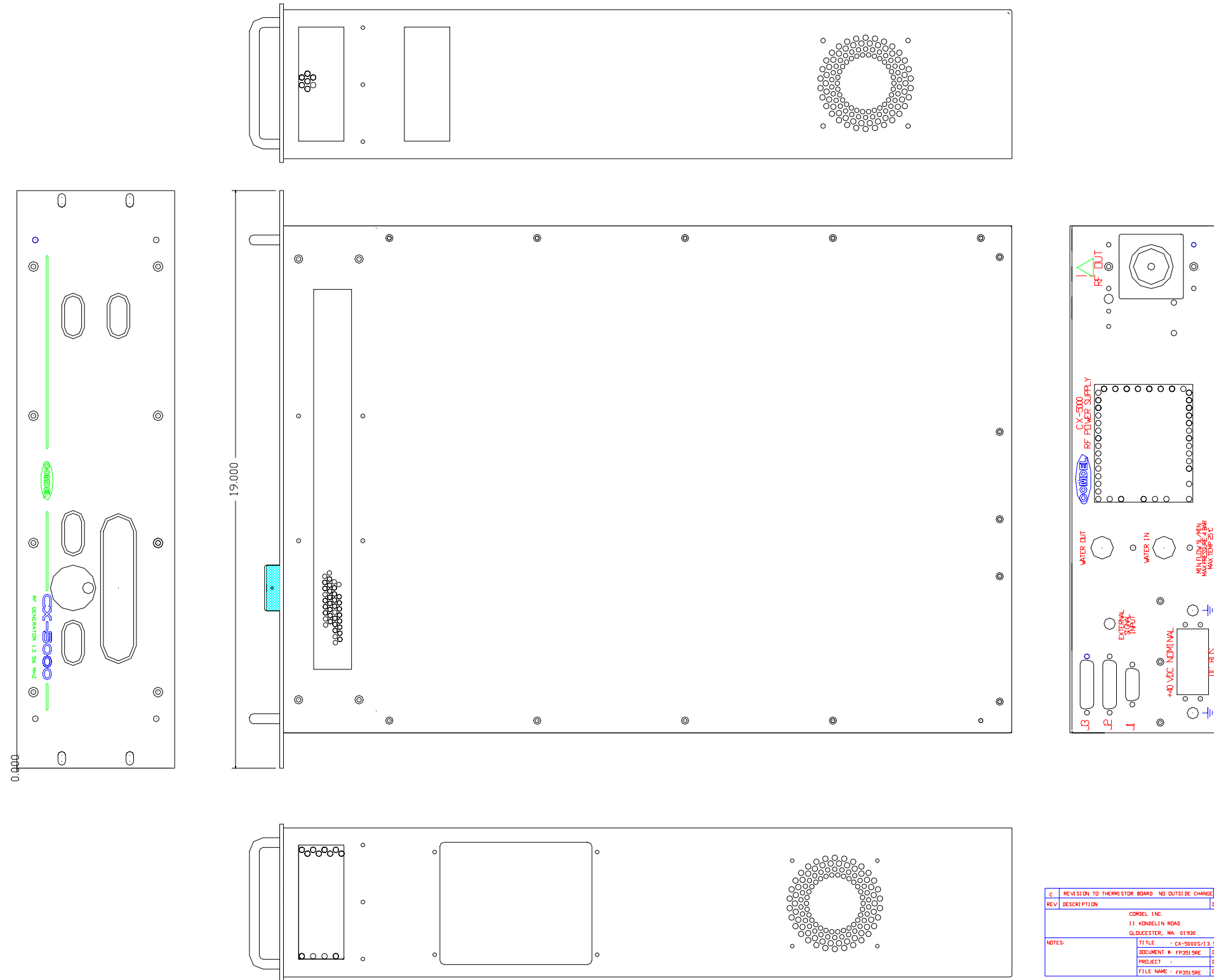
Comdel Branch Office Japan ♦ (ARD)
Phone: + 81-47-369-9393
Fax: +47-369-3317
Email: big-sakamoto@pra.co.jp

PRA Ltd. ♦ (ARD)
Phone: +47-369-3389
Fax: +47-369-3317
Email: m.ozawa@pra.jp

Comdel Warranty

Seller fully warrants that equipment, service, software, repair or parts supplied shall conform to the description in the quotation and agrees to repair or replace F.O.B. shipping point, any parts (excepting expendable items such as semiconductors and vacuum devices), services, or repairs that fail due to defects in material or workmanship within (1) one year of start-up of equipment or (24) twenty four months after shipment, whichever occurs first, or in the case of service or repair, within (1) one year of rendering service or repair. At Buyers request, failure analysis will be provided for all in-warranty failures returned by Buyer to Comdel Gloucester. Liability of Seller under this warranty shall exist provided that: Buyer exposes the product to normal use and service; in case of shipping damage, Buyer notifies Seller within 30 days of receipt of goods; the Buyer receives a Return Materials Authorization (RMA) number from Seller prior to the return of product for repair; if upon examination of such product by Seller it is disclosed that a defect in materials and/or workmanship does exist, and the defect in the product was not caused by improper conditions, misuse, abuse or negligence; and that Sellers warranty decals have not been removed or tampered with and the equipment has not been repaired or modified by anyone other than Seller's authorized personnel. Other than those expressly stated herein, **there are no other warranties of any kind, expressed or implied, and specifically excluded, but not by way of limitation, are the implied warranties of fitness for particular purpose and merchantability.**

It is understood and agreed that Seller's liability, whether in contract, in tort, under any warranty, in negligence or otherwise shall not exceed and Buyer's remedy is limited to either (i) repair or replacement of the defective parts F.O.B. shipping points, correction of the defective service or repair, or at Seller's option (ii) return of the product and refund of the purchase or service price. Under no circumstances shall Seller be liable for special, indirect, incidental, or consequential damages. The price stated for the equipment, service, repair or parts is a consideration in limiting Seller's liability. No action, regardless of form, arising out of the transactions of this agreement may be brought by Purchaser more than one year after the cause of action has accrued. The warranty for the equipment, service, repair or parts proposed in this quotation is as stated in the above paragraphs. It is not re-stated nor does it appear in any other form.



C	REVISION TO THERMISTOR BOARD NO OUTSIDE CHANGE	4/7/97	PR
REV	DESCRIPTION	DATE	APPROVED
COMDEL INC. 11 KONGELIN ROAD GLOUCESTER, MA 01930			
NOTES:	TITLE : CX-5000S/13.56 RF CONTROL DWG DOCUMENT # : FP351SRE DATE: 7/3/96 PROJECT : DR : STJ FILE NAME : FP351SRE CHK :		