

UMSE Series



- ▶ 공급 압력 Supply Air Pressure : 0.4 ~ 0.6 Mpa
- ▶ 최대 진공 Max. Vacuum : -92 kPa
- ▶ 최대 흡입유량 Max. Flow Rate : 150 ~ 240 Nℓ/m
- ▶ 에어 소모량 Air Consumption : 60 ~ 126 Nℓ/m
- ▶ 소음도 Noise Level : 50 ~ 65 dBA
- ▶ 사용온도 Working Temperature : -20 ~ 80 °C
- ▶ 재질 Material : AL, PPS
- ▶ 중량 Weight : 220 ~ 275g

Order no.

UMSE① - ② - ③ - ④

① 모델 / Model (전기모터펌프 동일한 용량

CAPACITY EQUIVALENT TO
ELECTRICITY MOTOR PUMP SIZE)

- 01 : 157 Nℓ/m (0.15 KW)
- 02 : 240 Nℓ/m (0.2 KW)

② 씰링 / SEALING

- N : NBR (표준 씰 / Standard Seal)
- V : VITON
- E : EPDM

③ 에어공급 밸브

AIR SUPPLY CNTROL VALVE

- X : 없음 (NONE)
- M1 : AC 110V
- M2 : AC 220V
- M4 : DC 24V

④ 진공 센서 / VACUUM SENSER

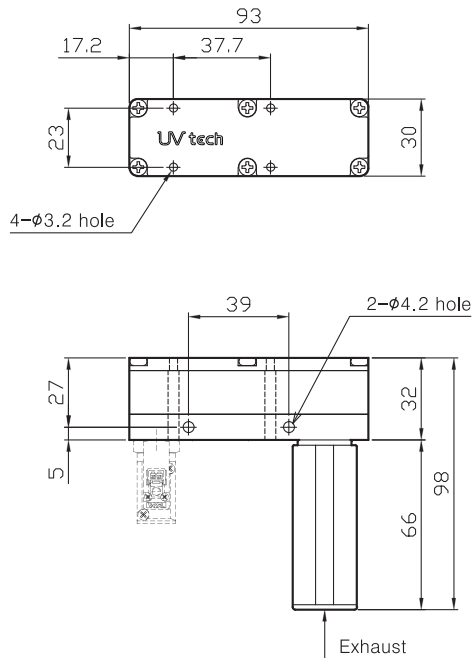
- X : 없음 (NONE)
- S : NPN (2점출력 output 2 point)
- PS : PNP (2점출력 output 2 point)

펌프 사양 / Pump characteristics

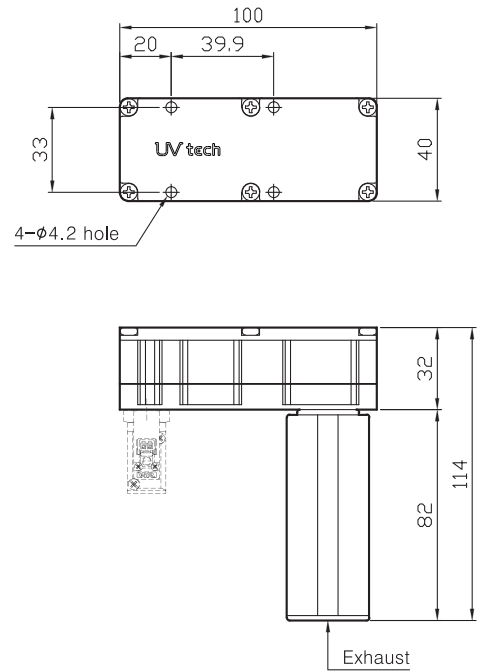
모델 MODEL	최대 진공도 Max. Vacuum - kPa (-mmHg)	최대 흡입유량 Max. Vacuum flow(Nℓ/m)	에어 소모량 Air consumption (N ℓ/m)	소음도 Noise level (dBA)	중량 Weight (g)	최소 호스 내경Ø (2m 이내) Min hose innerØ (within 2m)		
						공급 air supply	진공 vacuum	파기 exhaust
UMSE 01	-92	150	60 ~ 84	50 ~ 60	220	>6	>10	>12
UMSE 02	(-690)	240	90 ~ 126	55 ~ 65	275	>6	>12	>15

UMSE Series 치수정보

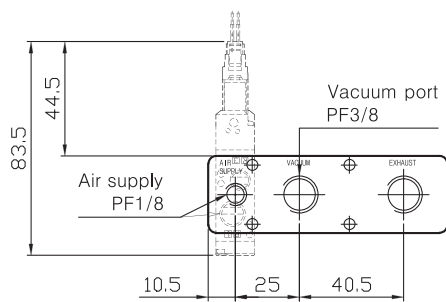
UMSE 01 type



UMSE 02 type



UMSE 01 type (with valve)



UMSE 02 type (with valve)

