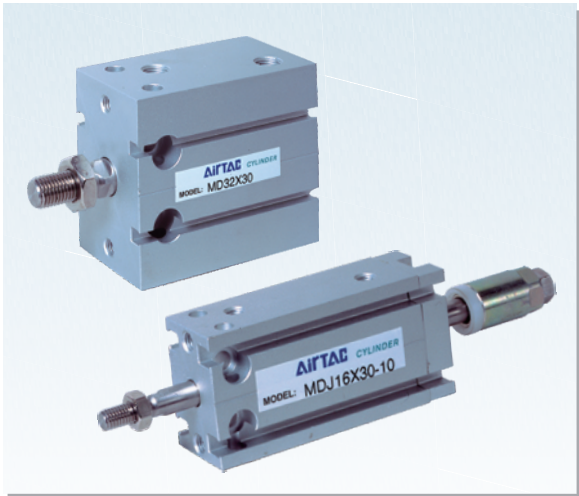
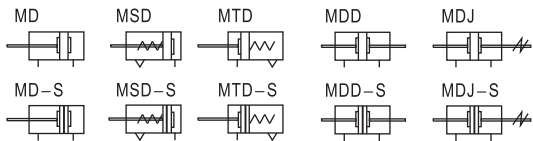


# Multi-mount cylinder

## MD Series



### Symbol



### Product feature

1. Manufactured by our enterprise.
2. There are several ways to fix the cylinder and it is convenient to install and use.
3. Several cylinders can be assembled together to effectively save the installation space.
4. The guide precision of piston rod is high and no additional lubricant is needed.
5. Cylinders of various specifications are optional.
6. The seal material with high temperature resistance is adopted to guarantee the normal operation of cylinder at 150°C(Option).

### Specification

Bore size(mm)	6	10	16	20	25	32
Acing type	MD, MDD, MDJ					
	MSD, MTD					
Fluid	Air(to be filtered by 40 μ m filter element)					
Operating pressure	Double acting: 0.1~1.0MPa(14~145psi)					
	Single acting: 0.2~1.0MPa(28~145psi)					
Proof pressure	1.5MPa(215psi)					
Temperature °C	-20~80					
Speed range mm/s	Double acting: 30~500					
	Single acting: 50~500					
Stroke tolerance	$\begin{matrix} +1.0 \\ 0 \end{matrix}$					
Cushion type	Bumper					
Port size ①	M5 × 0.8					1/8"

① PT thread, NPT thread and G thread are available. Add) Refer to P419~442 for detail of sensor switch.

### Stroke

Bore size (mm)		Standard stroke (mm)							Max. std stroke	Max. stroke
6	Double acting	5	10	15	20	25	30	35	35	40
	Single acting	5	10	15	20				20	-
10	Double acting	5	10	15	20	25	30	35	35	40
	Single acting	5	10	15	20				20	-
16	Double acting	5	10	15	20	25	30	40	50	70
	Single acting	5	10	15	20				20	-
20	Double acting	5	10	15	20	25	30	40	50	60
	Single acting	5	10	15	20				20	-
25	Double acting	5	10	15	20	25	30	40	50	60
	Single acting	5	10	15	20				20	-
32	Double acting	5	10	15	20	25	30	40	50	60
	Single acting	5	10	15	20				20	-

- Note) 1. Please contact the company for other special strokes.  
2. The dimensions of non-std stroke cylinder has the same dimensions as the next longer stroke std. stroke cylinder. e.g. 23mm stroke cylinder has the same dimensions of 25 std. stroke cylinder.

### Ordering code

MD 32 × 30 S □	
MDD32 × 30 S □	
MDJ 32 × 30-30 S □	
Model	Thread type ①
MD: Multi-mount cylinder(Double acting type)	Blank: PT
MSD: Multi-mount cylinder(Single acting-push type)	T: NPT
MTD: Multi-mount cylinder(Single acting-pull type)	G: G
MDD: Multi-mount cylinder(Double rod type)	
MDJ: Multi-mount cylinder(Adjustable stroke type)	
Bore size	Magnet
6 10 16 20 25 32	Blank: Without magnet
	S: With magnet
Stroke	Adjustable stroke
Refer to stroke table for details	Model Adjustable stroke
	MDJ 10: 10mm
	20: 20mm
	30: 30mm
	Others No this code

① When the thread is standard, the code is blank.

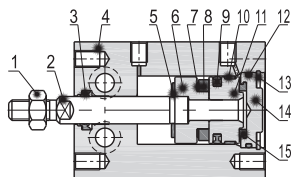


# Multi-mount cylinder

## MD Series

### Inner structure and material of major parts

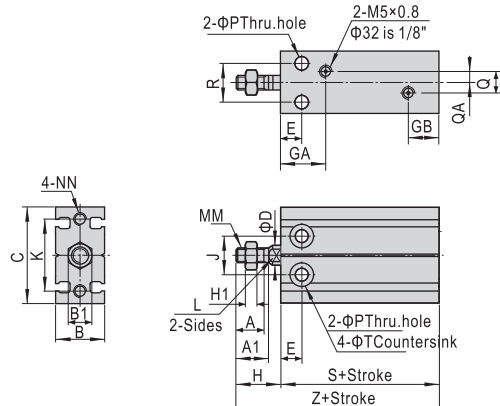
#### MD-S



NO.	Item	Material
1	Rod nut	Carbon steel
2	Piston rod	Stainless steel
3	Rod packing	NBR
4	Body	Aluminum alloy
5	Bumper	TPU
6	Magnet holder	Aluminum alloy
7	Magnet washer	NBR
8	Magnet	Sintered metal(Neodymium-iron-boron)
9	Piston seal	NBR
10	Wear ring	Wear resistant material
11	Piston	Aluminum alloy
12	O-ring	NBR
13	C-clip	Spring steel
14	Back cover	Aluminum alloy
15	Bumper	TPU

### Dimensions

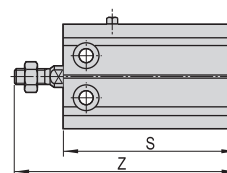
#### MD



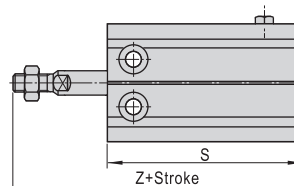
Bore size\Item	A	A1	B	B1	C	D	E	GA	GB	H	H1	J	K	L	MM	NN
6	7	8	16.5	5.5	22	3	7	14	10	13	2.4	10	17	-	M3 × 0.5	M3 × 0.5Dp:5
10	10	11	16.5	7	24	4	7	15.5	10	16	2.2	11	18	-	M4 × 0.7	M3 × 0.5Dp:5
16	11	12.5	20	8	32	6	7	14.5	10	16	4	14	25	5	M5 × 0.8	M4 × 0.7Dp:5
20	12	14	26	10	40	8	9	19	11	19	5	16	30	6	M6 × 1.0	M5 × 0.8Dp:7.5
25	15.5	18	32	12	50	10	10	21.5	8.5	23	6	20	38	8	M8 × 1.25	M5 × 0.8Dp:8
32	19.5	22	40	17	62	12	11	23	12.5	27	6	24	48	10	M10 × 1.25	M6 × 1.0Dp:9

Bore size\Item	P	Q	QA	R	T	S		Z	
						Without magnet	With magnet	Without magnet	With magnet
6	3.2	-	-	7	6Dp:5	33	33	46	46
10	3.2	-	-	9	6Dp:5.6	36	36	52	52
16	4.5	3	1.5	12	7.6Dp:6.5	30	40	46	56
20	5.5	9	4.5	16	9.3Dp:8	36	46	55	65
25	5.5	12	6	20	9.3Dp:9	40	50	63	73
32	6.6	13	4.5	24	11Dp:11.5	42	52	69	79

#### MSD



#### MTD



Item	S(Without magnet)				S(With magnet)				Z(Without magnet)				Z(With magnet)			
Bore size\Stroke	5St	10St	15St	20St	5St	10St	15St	20St	5St	10St	15St	20St	5St	10St	15St	20St
6	43	48	58	63	43	48	58	63	56	61	71	76	56	61	71	76
10	46	51	61	66	46	51	61	66	62	67	77	82	62	67	77	82
16	45	50	65	70	55	60	75	80	61	66	81	86	71	76	91	96
20	51	56	71	76	61	66	81	86	70	75	90	95	80	85	100	105
25	55	60	75	80	65	70	85	90	78	83	98	103	88	93	108	113
32	57	62	77	82	67	72	87	92	84	89	104	109	94	99	114	119

Remark) The unmarked dimension is the same as MD standard type.



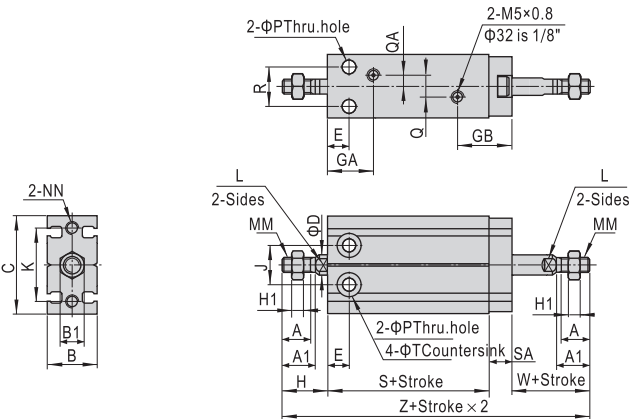
MD, MK

Multi-mount cylinder



MD Series

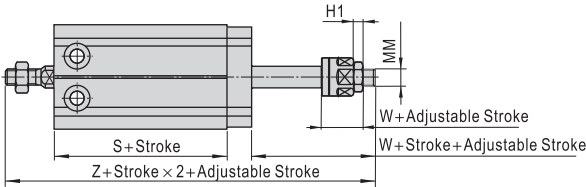
MDD



Bore size\Item	A	A1	B	B1	C	D	E	GA	GB	H	H1	J	K	L	P	Q	MM	NN
6	7	8	16.5	5.5	22	3	7	14	16	13	2.4	10	17	-	3.2	-	M3 × 0.5	M3 × 0.5Dp:5
10	10	11	16.5	7	24	4	7	15.5	16	16	2.4	11	18	-	3.2	-	M4 × 0.7	M3 × 0.5Dp:5
16	11	12.5	20	8	32	6	7	14.5	17.5	16	4	14	25	5	4.5	3	M5 × 0.8	M4 × 0.7Dp:5
20	12	14	26	10	40	8	9	19	20	19	5	16	30	6	5.5	9	M6 × 1.0	M5 × 0.8Dp:7.5
25	15.5	18	32	12	50	10	10	21.5	17.5	23	6	20	38	8	5.5	12	M8 × 1.25	M5 × 0.8Dp:8
32	19.5	22	40	17	62	12	11	23	22.5	27	6	24	48	10	6.6	13	M10 × 1.25	M6 × 1.0Dp:9

Bore size\Item	QA	R	SA	T	W	S		Z	
						Without magnet	With magnet	Without magnet	With magnet
6	-	7	6	6Dp:5	13	38	38	70	70
10	-	9	6	6Dp:5.6	16	36	36	74	74
16	1.5	12	7.5	7.6Dp:6.5	16	30	40	69.5	79.5
20	4.5	16	9	9.3Dp:8	19	36	46	83	93
25	6	20	9	9.3Dp:9	23	40	50	95	105
32	4.5	24	10	11Dp:11.5	27	42	52	106	116

MDJ



Bore size\Item	MM	H1	W	S		Z	
				Without magnet	With magnet	Without magnet	With magnet
6	M3 × 0.5	2.4	13	38	38	70	70
10	M4 × 0.7	2.2	14.7	36	36	72.7	72.7
16	M5 × 0.8	4	17	30	40	70.5	80.5
20	M6 × 1.0	5	21	36	46	85	95
25	M8 × 1.25	6	25	40	50	97	107
32	M10 × 1.25	6	27	42	52	106	116

Remark) The unmarked dimension is the same as MD standard type.

