

# Stopper cylinder

## TWQ Series



### Specification

Bore size(mm)		20	25	32	40	50
Fluid		Double acting type、Single acting-pull type				
Action		Air(to be filtered by 40 μ m filter element)				
Operating pressure	Double acting type	0.15~1.0MPa(23~145psi)				
	Single acting-pull type	Φ20: 0.25~1.0MPa(35~145psi)    others: 0.2~1.0MPa(28~145psi)				
Proof pressure		1.5MPa(215psi)				
Temperature    ℃		-20~80				
Range of stroke tolerance		+1.0 0				
Cushion type		Bumper				
Lubrication		Non required				
Mounting type		Thru hole or screw hole				
Stopper type		Round rod, Flat rod/Roller		Round rod, Flat rod/Roller, Shock less stopper(with absorber)		
Port size    ①		M5×0.8		1/8"		

① PT thread, NPT thread and G thread are available. Add) Refer to Page 419~442 for details of sensor switch.

### Symbol



### Product feature

1. JIS standard is implemented.
2. Widening the piston rod can effectively improve the impact resistance ability of the cylinder.
3. The installation height is adjustable and several rod end modes can be selected. The stopper cylinder with shock absorber has a better cushion effect.
4. Shockless stopper cylinder is attached with self-lock device, which can prevent the returning of rebound of rocker caused by bar objects.
5. Several series and specifications for stopper cylinders can be selected.

### Ordering code

TWQ 50 × 20 S K				
Model		Thread type ①		
		Blank:PT T:NPT G:G		
Bore size		Self-lock function		
		Blank:Without self-lock F:With self-lock		
Stroke		Stopper		
		C: Round rod B: Flat rod R: Roller K: Shockless stopper (adjustable absorber)		
Magnet		Magnet		
		Blank: Without magnet S: With magnet		

① When the thread is standard, the code is blank.

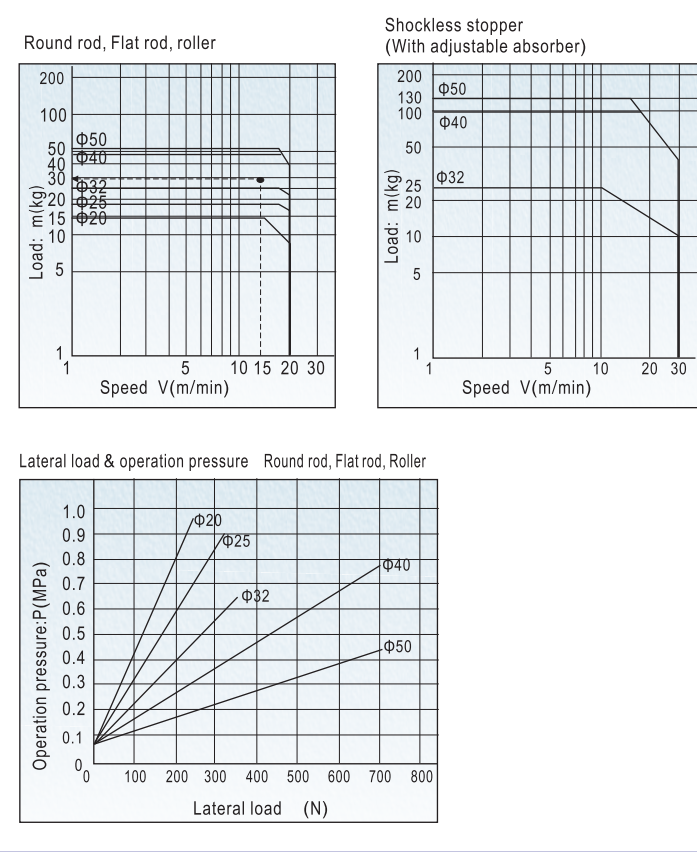


# Stopper cylinder



## TWQ Series

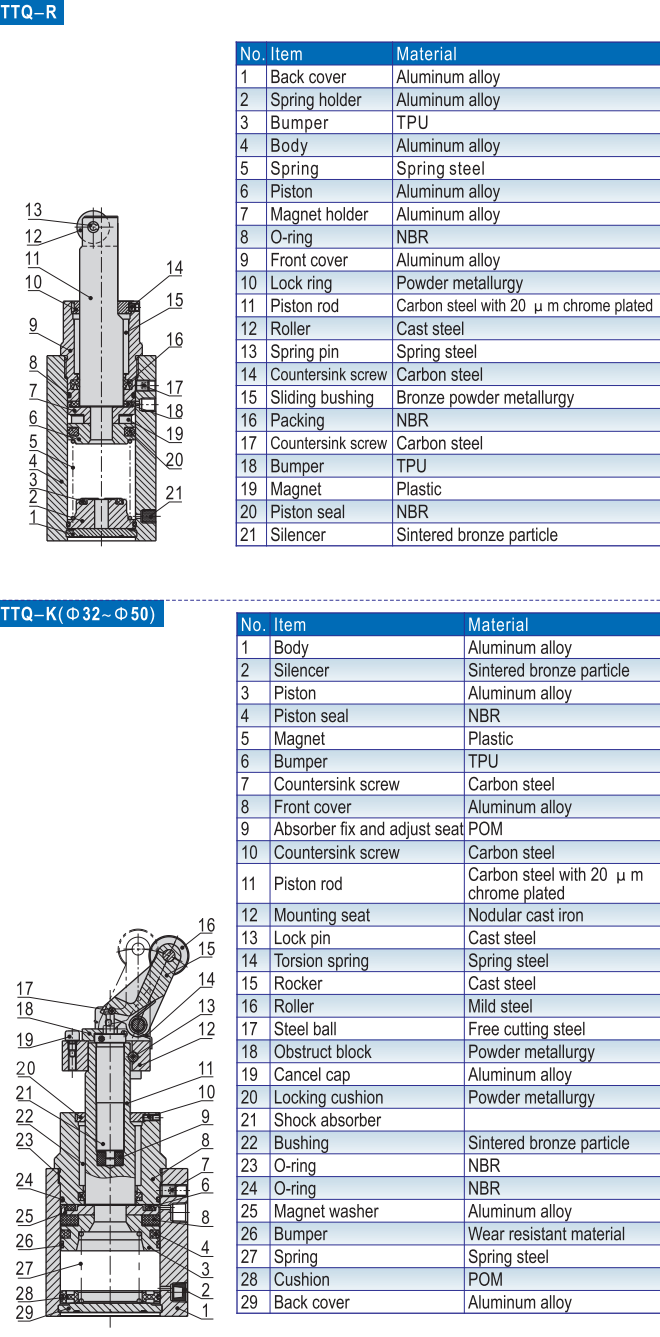
### How to select



### Installation and application

Please refer to page 411 for details.

### Inner structure and material of major parts



TW



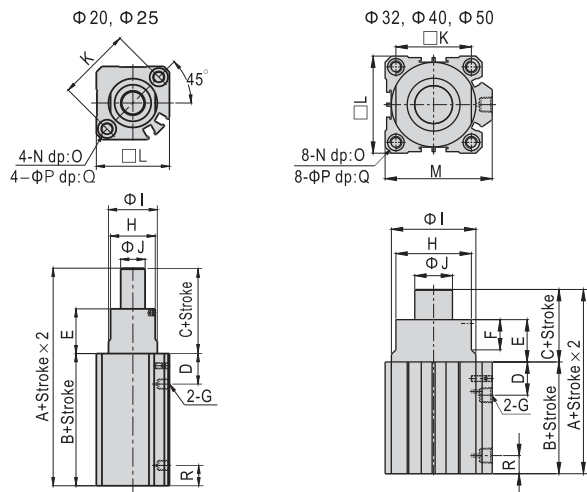
# Stopper cylinder

**AirTAC**

## TWQ Series

### ■ Dimensions

#### Round rod (TWQ-C, TTQ-C)



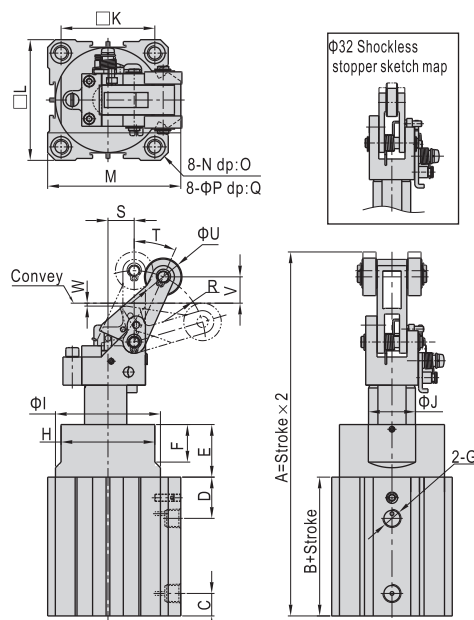
Bore size\Item	A	B	C	D	E	F	G	H	I
20	67	45	22	16.5	22	11	M5	22	24
25	68	48	20	18	20	15	M5	28	30
32	68	48	20	20	20	15	1/8"	34	36
40	80.5	52.5	28	20	28	18	1/8"	41	44
50	82	54	28	22	28	20	1/8"	50	56

Bore size\Item	J	K	L	M	N	O	P	Q	R
20	12	36	36	-	M6×1.0	10	9	7	9
25	16	40	40	-	M6×1.0	10	9	7	9
32	20	34	45	49.5	M6×1.0	10	9	7	10
40	25	40	53	57	M6×1.0	10	9	7	11
50	25	50	64	71	M8×1.25	14	11	8	12

Note: The type with magnet and the type without magnet have the same dimension.

#### Shockless stopper (TWQ-K(F), TTQ-K(F))

Φ32, Φ40, Φ50

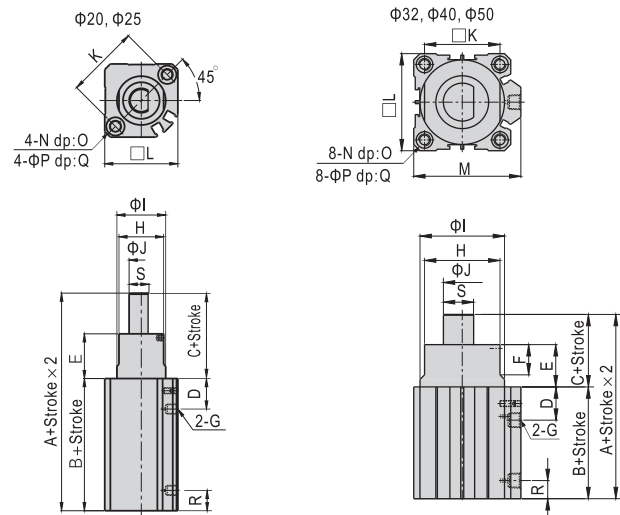


Bore size\Item	A	B	C	D	E	F	G	H	I	J	K
32	120.5	48	10	20	20	15	1/8"	34	36	20	34
40	152.5	52.5	11	20	28	18	1/8"	41	44	25	40
50	154	54	12	22	28	20	1/8"	50	56	25	50

Bore size\Item	L	M	N	O	P	Q	R	S	T	U	V	W
32	45	49.5	M6×1.0	10	9	7	24.5	11.5	28	15	4.4	1
40	53	57	M6×1.0	10	9	7	38	14	24	20	14	1.6
50	64	71	M8×1.25	14	11	8	38	14	24	20	14	1.6

Note: The type with magnet and the type without magnet have the same dimension.  
The type with self-lock and the type without self-lock have the same dimension.

#### Flat rod (TWQ-B, TTQ-B)

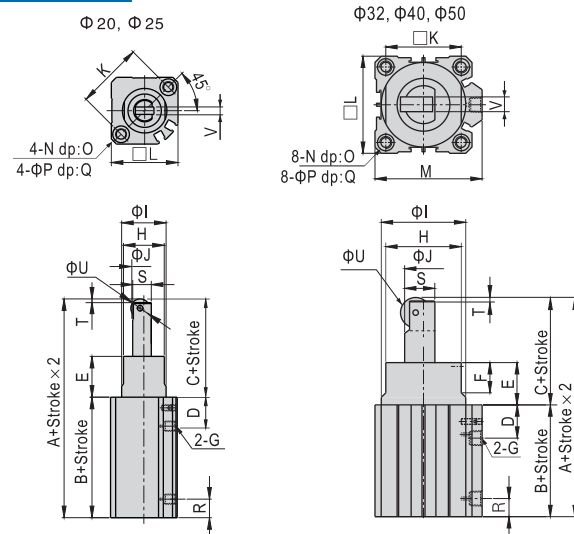


Bore size\Item	A	B	C	D	E	F	G	H	I	J
20	67	45	22	16.5	22	11	M5	22	24	12
25	68	48	20	18	20	15	M5	28	30	16
32	68	48	20	20	20	15	1/8"	34	36	20
40	80.5	52.5	28	20	28	18	1/8"	41	44	25
50	82	54	28	22	28	20	1/8"	50	56	25

Bore size\Item	K	L	M	N	O	P	Q	R	S
20	36	36	-	M6×1.0	10	9	7	9	10
25	40	40	-	M6×1.0	10	9	7	9	14
32	34	45	49.5	M6×1.0	10	9	7	10	18.5
40	40	53	57	M6×1.0	10	9	7	11	22.5
50	50	64	71	M8×1.25	14	11	8	12	22.5

Note: The type with magnet and the type without magnet have the same dimension.

#### Roller (TWQ-R, TTQ-R)



Bore size\Item	A	B	C	D	E	F	G	H	I	J	K
20	78	45	33	16.5	22	11	M5	22	24	12	36
25	81	48	33	18	20	15	M5	28	30	16	40
32	87	48	39	20	20	15	1/8"	34	36	20	34
40	103.5	52.5	51	20	28	18	1/8"	41	44	25	40
50	105	54	51	22	28	20	1/8"	50	56	25	50

Bore size\Item	L	M	N	O	P	Q	R	S	T	U	V
20	36	-	M6×1.0	10	9	7	9	10	2	10	4
25	40	-	M6×1.0	10	9	7	9	14	2	12	6
32	45	49.5	M6×1.0	10	9	7	10	18.5	3	20	8
40	53	57	M6×1.0	10	9	7	11	22.5	4	20	8
50	64	71	M8×1.25	14	11	8	12	22.5	4	20	8

Note: The type with magnet and the type without magnet have the same dimension.

